

Brunel
UNIVERSITY
L O N D O N

2014



Undergraduate Prospectus



Brunel

UNIVERSITY

L O N D O N

Brunel University
Kingston Lane
Uxbridge
Middlesex UB8 3PH

Tel: +44 (0)1895 274000
Fax: +44 (0)1895 232806
Web: www.brunel.ac.uk

Easy access to central London

See pages 29 and 214

Campus-based University

See page 27

Work experience included*

See page 22

* Many of our courses offer a one-year block of work experience (a 'thick-sandwich' course) or in some cases two six-month periods (a 'thin-sandwich' course).

Contents

Open days and campus tours	5
Teaching and research	7
Facilities and resources	11
Work and careers	22
Campus life	27
Accommodation	34
Support, health and wellbeing	37
Disability and Dyslexia Service.....	40
Brunel International.....	43
Fees and funding.....	46
Subject areas and courses	53
Degree and course structure	200
Modules and credits.....	202
Teaching and assessment.....	203
Professional experience and accreditation.....	204
Applying to Brunel.....	206
Entry requirements	208
Summary of Terms.....	212
Visiting Brunel	214
Who was Brunel?	221
Index	222



Open days and campus tours

Booking is essential – see page 214

DATES FOR STUDENTS CONSIDERING ENTRY FOR 2014:

- Friday 21 June 2013
- Thursday 27 June 2013
- Friday 6 September 2013
- Wednesday 11 September 2013
- Friday 13 September 2013

WEDNESDAY CAMPUS TOURS

One hour tours run from mid-September to late November 2013 (excluding half-term week)

HALF-TERM CAMPUS TOURS

One hour tours run on two weekdays during October half-term 2013 (check the Web nearer the time for details)

VIRTUAL OPEN DAY

Explore Brunel online
www.brunel.ac.uk/courses/open-days/virtual-open-day

REQUEST A PROSPECTUS

- 🔗 Go to our homepage www.brunel.ac.uk and click on 'Order a prospectus'
- ☎ +44 (0)1895 265599
- ✉ course-enquiries@brunel.ac.uk

ADMISSIONS ENQUIRIES

Contact the Admissions Tutor listed for your course. For general enquiries, please contact:

Admissions Office

- 🔗 www.brunel.ac.uk/apply
- ☎ +44 (0)1895 265265
- ✉ admissions@brunel.ac.uk

INTERNATIONAL ENQUIRIES

- 🔗 www.brunel.ac.uk/international
- ☎ +44 (0)1895 269700
- ✉ international@brunel.ac.uk

ADJUSTMENT AND CLEARING

The following will operate during the early stages of the UCAS Adjustment and Clearing Scheme:

- 🔗 www.brunel.ac.uk/clearing
- ✉ clearing@brunel.ac.uk



Highly rated, flexible courses

Our courses are built around self-contained modules comprising both core (compulsory) and optional topics. This means that, for most courses, you can tailor the content to suit your own requirements and interests as you progress. Many subjects also allow you to incorporate modules from outside your course, for example modules from other courses within your academic School.

NATIONAL STUDENT SURVEY (NSS) 2012

Brunel maintained a good performance overall in the 2012 NSS, with outstanding success for the Union of Brunel Students, the Library and Academic Skills Service (ASK).



LEAGUE TABLES

Brunel earned significant improvements across the university league tables in 2012 with improvements in student satisfaction, elevating Brunel to 17th in the UK in *The Good University Guide* published in *The Times*. In *The Guardian University Guide* Brunel was the biggest climber, jumping from 82nd to 44th. Brunel was also ranked top in London and 35th in the world in the first global ranking of the top 100 universities founded in the last 50 years, by *Times Higher Education*.



Research-led, up to the minute teaching

Research Centres and Institutes across the whole range of our subject areas are helping to deliver solutions to global challenges. The following examples demonstrate the impact of Brunel's research.

The Centre for Infection, Immunity and Disease Mechanisms is involved in transatlantic research into novel treatments for illnesses like asthma, Alzheimer's disease, malaria and cancer.



The Institute for Contemporary Middle Eastern Music forges links and encourages the sharing of skills and ideas in music between the Middle East and the West.



The Social and Political Thought Research Group brings together leading scholars in the fields of social and political theory, the history of political thought and political philosophy, who responded to the recent global wave of protest movements by holding a high-profile seminar series.



Brunel was awarded £15 million from the Higher Education Funding Council for England as part of a new £60 million initiative to establish a National Research Centre for Structural Integrity.



How does research benefit you?

All our students benefit from Brunel's focus on research.

We are proud of the usefulness of our research to the community and the world around us. It improves lives and addresses global issues, while at the same time informing the content of the courses we teach.

The last Research Assessment Exercise (RAE) judged 82% of our research to be of international standing. In addition, 21% of our academics in the RAE were in the first three years of their careers. We are one of the country's leading investors in the researchers of the future, keeping our teaching and research fresh and forward-looking.

- **Up to the minute course content**

Brunel's academics are at the forefront of their fields, so you can be confident that your course is relevant and up to date.

- **Valuable links with employers**

Research is responsible for much of our collaborative work with business, industry and the public sector. These links provide opportunities for work experience, and demonstrate Brunel's commitment to producing the professionally-minded graduates that employers want to recruit.

- **An atmosphere of innovation**

Research generates a culture of intellectual endeavour among students and staff, and encourages the interchange of ideas and expertise for which Brunel is famous.

- **THE Awards 2012**

Brunel was shortlisted for the prestigious Times Higher Education University of the Year award for 2012 as a result of strong improvements in the annual university league tables, the award of the Queen's Anniversary Prize and other research highlights and the recruitment of household names such as Benjamin Zephaniah and Will Self.



Queen's Anniversary Prize

Brunel University Institute for the Environment's research revealing the link between chemicals in rivers and reproductive health won the Queen's Anniversary Prize for Higher and Further Education in 2011.

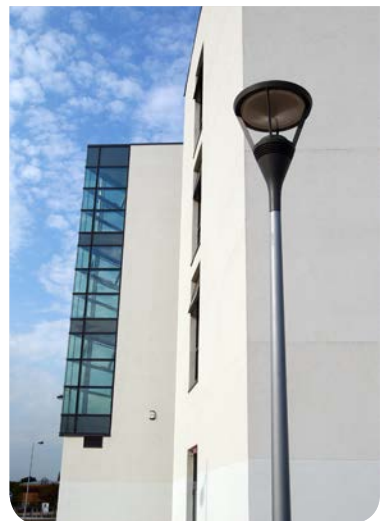
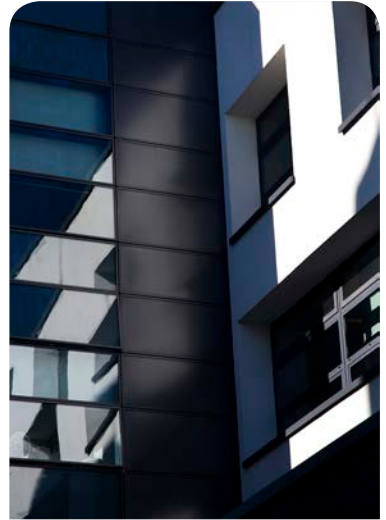


Modern campus facilities

Brunel's investment in buildings and infrastructure over the past decade is now in excess of £400 million, with many new and refurbished social, teaching and sporting facilities, halls of residence, and green spaces to enjoy. This investment has transformed the campus, which retains its original 1960s architecture but with the addition of striking new buildings and landscaping.

Our latest acquisition is the £30 million flagship Eastern Gateway Building that opened in July 2012 providing teaching and research facilities, a new home for Brunel Business School, a large auditorium, a café and an art gallery.

The Schools of Health Sciences and Social Care and Engineering and Design have also benefited from the addition of new, multi-million pound buildings. In addition, the Lecture Centre has undergone an extensive renovation. The refurbished Antonin Artaud building contains drama and performance studios, a music room, a public performance venue and radio and video-editing suites.





Study resources

Brunel's study resources can help you to achieve your potential and make the most of your degree.

THE LIBRARY

The Library, located at the centre of the campus, provides you with many of the study resources you will need during your time at Brunel, including:

- an extensive collection of books, journals and audio-visual materials
- online databases, over 150,000 eBooks and over 36,000 eJournals available via the Library website
- 1,200 study spaces and nearly 500 PCs, in a range of environments including group study rooms and silent study areas
- WiFi capability throughout the building
- induction sessions, information skills training and one-to-one support to help you find and use resources, as well as support in the use of statistics and related packages such as SPSS
- Subject Liaison Librarians linked to academic Schools to support staff and students in accessing and using relevant resources
- 24 hour opening Monday to Friday during term-time

The Library along with ASK (see below) was shortlisted for the THE Award for Outstanding Student Support in 2012, receiving a 'Highly Commended' status, and also received an impressive 91% for student satisfaction in the NSS 2012.

ACADEMIC SKILLS SERVICE (ASK)

ASK specialises in teaching you the skills you need to learn independently and thrive academically throughout your time at Brunel. Whether it's advice on researching, planning and writing assignments, giving presentations, time management or maths, numeracy and statistics, ASK offer workshops, individual advice and resources to support your learning. See the ASK website at www.brunel.ac.uk/library/ask for full details of services. Also, ASK, in conjunction with other university services, has developed a website for new students preparing to study in higher education. For more information, visit: www.brunel.ac.uk/headstart

THE COMPUTER CENTRE AND MEDIA SERVICES

All students use the services provided by the Computer Centre and Media Services to enhance their learning and personal development. As part of your registration process, you will be given a username which lasts for the duration of your course. Your username and password allow access to facilities, including:

- PC workstations across campus, many of which are open around the clock
- a filestore allocation sufficient to your academic needs, where you can keep your work securely
- a comprehensive print/scan/copy service (including colour and A3 options) using a prepay account linked to your username, with the ability to send print jobs to the network and print from any printer on the service
- the University's virtual learning environment, including online Library databases
- the Connect services, with which you may connect your own computer to the University network from your halls of residence or via a wireless connection from other areas on campus
- the Brunel intranet, which provides University news, course information and access to student support
- an audiovisual and media equipment loan service to enhance presentations and projects

You will be allocated an email account to use for all your University correspondence; this account will remain with you after you graduate, so you will be able to keep in touch with Brunel and your course mates.

THE INTERNATIONAL PATHWAYS AND LANGUAGE CENTRE (IPLC)

Academic English

Students whose first language is not English can develop their English language and academic skills by attending in-session courses that consist of once-weekly classes that last up to two hours. Courses include:

- Academic Writing
- Academic Grammar and Vocabulary
- Dissertation Writing
- Lecture Skills
- Presentation Skills
- Professional English
- Pronunciation and Social Conversation.

One-to-one consultations are available for help with written assignments, dissertations or theses, presentations, CVs, job application letters and personal statements.

For more information visit:

www.brunel.ac.uk/international/current-students/insessional-english

Modern Foreign Languages

The IPLC offers a range of modern foreign language courses at a variety of levels, currently in Arabic, French, German, Italian, Japanese, Mandarin Chinese, Russian, Polish, Portuguese and Spanish. The classes are taught by qualified, native speakers, and you will receive a Certificate of Achievement upon successful completion of the course.



Arts and culture

The Arts Centre

The Arts Centre organises weekly classes, events, exhibitions, concerts and productions throughout the year, and provides the space, tuition and specialist equipment required for your creative skills to flourish:

- Professionally-taught classes and workshops are offered in a wide variety of arts, including pottery, painting, drawing, creative writing, acting and music. Classes are free once you have paid a small annual membership fee and any necessary costs for materials
- There are several student drama groups and major productions with a professional director which are performed. Auditions are open to all students
- A wide range of vocal and instrumental music groups rehearse each week under professional direction. Individual tuition is available and the Arts Centre organises concerts throughout the year, including performances from world-renowned musicians and Brunel's own students and staff

To find out more about the Arts Centre's activities, visit www.brunel.ac.uk/artscentre

MUSIC AWARDS

University Music Awards are made annually towards the cost of tuition for promising singers and instrumentalists who are not taking music performance as part of their academic course. The awards are open to both postgraduate and undergraduate students, and auditions are held at the beginning of each academic year. For more information, email artscentre@brunel.ac.uk

THE BELDAM GALLERY

The Beldam Gallery, in the new Eastern Gateway Building, is part of the Arts Centre. It hosts a diverse programme of temporary exhibitions showing a wide range of contemporary art and craft including painting, drawing, sculpture, photography, installation, live art, performance, film, video and sound art. Regional, national and international artists feature regularly, and the annual "All Our Own Work" exhibition shows work produced in the Arts Centre's own studios.





The School of Arts

The School of Arts runs various music groups that are open to all members of the University (auditions may be required for some ensembles).

They also run other events that all can attend, including ARTS@ARTAUD, a regular performance platform for creative people of every kind where animators, musicians, filmmakers, writers, performers and designers present their work in a friendly, informal setting. With refreshments available and a DJ between acts, it really is a great evening of entertainment.

Events

Throughout the year the University organises many cultural activities and festivities. Many are free to attend and there is often the chance to get actively involved.

- the Public Lecture Series
- inaugural Lecture Series
- guest speaker events
- FACE (Festival of Awareness, Creativity and Expression)
- One World Week





Usain Bolt

“

Brunel is awesome. The University has done great for us, we come here every summer and we get a lot of support from everybody there, so thank you guys.

”

Sport at Brunel

Sport is an important part of campus life for many students at Brunel, whether they are aspiring to compete at the next Olympics or want to be part of the vibrant sports club scene. You might want to try something new or do your own thing, and we can help with that too.

Brunel's Sports Federation has 54 sports clubs for students to choose from – all run by students for students. Many of the teams compete in the BUCS (British Universities and Colleges Sport) premier leagues.

The sports facilities used by the clubs rank amongst the best in the UK and have been used by some of the best athletes in the world. Usain Bolt and his Racers Track Club have been based at Brunel every summer since 2009. After his 4x100m relay victory at the London Olympics Bolt told the BBC “Brunel is awesome. The University has done great for us, we come here every summer and we get a lot of support from everybody there, so thank you guys.”

The South Korean Olympic team were also based at Brunel for their London 2012 training camp and said that this was the most important factor in achieving their fantastic fifth place in the overall medal table.

Brunel also hosted Athletics Canada's Paralympic team in preparation for London 2012.



www.brunel.ac.uk/life/fitness

Performance sport

Brunel teams and individual athletes have seen plenty of success on the national and international sporting stages. To keep up this proud tradition Brunel has launched Performance Programmes in a small number of key sports, including athletics, netball, rugby union, rowing, and squash. These Performance Programmes give members special access to elite strength and conditioning facilities as well as extra coaching and fitness sessions.

SPORTS SCHOLARSHIPS

The Sports Scholarship scheme is one of the most well established in the UK and has helped Olympians such as Kate Walsh (hockey), Perri Shakes-Drayton (athletics), and Heather Fell (modern pentathlon) to balance their sport and study commitments whilst at Brunel. The scheme offers:

- a financial award and assistance with competition expenses
- accommodation allocated next to the sports facilities if you choose to live on campus
- mentoring support to help you manage your commitments
- free use of the sports facilities

For further information on Sports Scholarships please email details of your sporting performances and the course to which you are applying to sports-scholarships@brunel.ac.uk.



Ashley Bryant



The use of world class coaching and facilities here at Brunel has guided me through the start of my athletics career. Taking advantage of great Sport Scholarship accommodation next door to the track and having flexibility in my course has taken away unwanted stress to allow me to concentrate on my performance on the track and in the classroom. With added benefits of financial support, kit and physio, the Brunel Scholarship is a very well-rounded support programme.





From mainstream to the extreme

University life gives students the chance to try new activities and we have made sure that there are many new experiences on offer at Brunel. We know that our diverse student body will not all be interested in traditional sports so we help them to play the sports that they want to play. You might want to try your hand at some of these new sports which have been introduced at Brunel in the last few years:

- American football
- Cheerleading
- Taekwondo
- Target shooting
- Triathlon

You can also get out in the fresh air (or in the water!) and master some of these great activities:

- Rock climbing
- Sky diving
- Scuba diving
- Sailing
- Skiing and snowboarding

As well as taking part, don't forget that volunteering to run one of the sports clubs can be hugely rewarding as well as giving you valuable experience.

Do your own thing

If you are the kind of person who prefers to work out exactly when it suits you or to join in every now and then, we have something for you as well.

ACTIVE BRUNEL

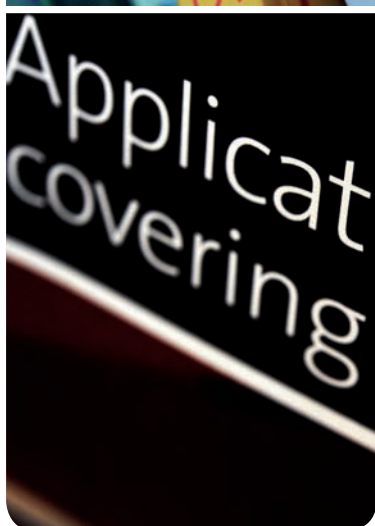
Active Brunel is a programme of relaxed, informal sport and activity sessions run at different times throughout the week. Supported by the Sport England Lottery Fund, it is great value. There is no need to worry about knowing the rules or being good at the sport already, just turn up and give it a go. Here are just some of the Active Brunel sessions that students are currently enjoying:

- Gym sessions
- Handball
- Trampolining
- RUSH Hockey
- Basketball
- Judo
- Hit the Pitch – Softball
- The HOP (exercise to music)
- Korfball
- Self defence
- Aerobics

MORE ENERGY GYM

Brunel's health and fitness facilities are packed with the best equipment for the casual exerciser, the fitness enthusiast, and the serious sports performer. Qualified instructors are on hand to give advice and there are a range of flexible membership options on offer.





All the careers resources you need

Coming to university represents a huge investment in money as well as time and you're likely to be thinking about the kind of job you might get when you graduate and the skills and experience you will need – your 'employability'. Brunel's focus on jobs and employability means that our graduates have the skills and information to compete for the jobs they want.

Careers advice and opportunities are co-ordinated by the Placement and Careers Centre (PCC). With an extensive careers library and interactive online service, major autumn careers fair, regular workshops, employer presentations and subject-specific 'Careers Uncovered' events, you can make informed decisions from your first year onwards. Local, national and international recruiters target Brunel, and there are typically over 1,000 employers advertising with us at any one time.

Work placements

One of Brunel's most distinctive features is the commitment to including periods of work experience – sandwich placements – in many of our courses. Four-year sandwich courses help students to develop the practical knowledge and skills required to succeed in the competitive graduate job market. Many of our courses offer a one-year block of work experience (a 'thick-sandwich' course) or in some cases two six-month periods (a 'thin-sandwich' course). Placements are usually paid, and some students are even offered permanent employment after they graduate. You may be able to apply for a Placement Bursary if your placement is unpaid, as is often the case for students seeking employment in professions such as law, finance, IT and new media.

There are also opportunities to study or undertake a work placement overseas. We have exchange agreements with universities in Europe and the USA, and students have recently undertaken placements in China and Dubai. Each academic School has a dedicated Placement Officer in the Placement and Careers Centre who understands the industry and has long-established links with employers.

Those courses which do not offer sandwich placements often include a work experience module, so you can still gain experience of working in the real world before you graduate.

BRUNEL OFFERS THE UK'S 'BEST PLACEMENT SERVICE'

Brunel's Placement and Careers Centre was named 'Best Placement Service' in 2012 for the second time by RateMyPlacement.co.uk. In 2011 the Centre won the accolade of 'University with a Forward-thinking Attitude to Work-based Learning'. The PCC also holds a Matrix Excellence award, a quality standard for information advice and guidance services.

ACCREDITATION

Some courses have official 'seals of approval' in the form of accreditation by relevant professional institutions. Check the course descriptions (from page 53 onwards) to see if this could apply to you.

ENTREPRENEURSHIP

In 2010, Brunel was shortlisted for the *Times Higher Education* Entrepreneurial University of the Year Award, in recognition of its innovative initiatives to encourage enterprising and creative thinking amongst the whole University community. These include the success of its in-house companies, strategic business partnerships and major student competitions and exhibitions, as well as awards for Global Business Excellence and the UK's best Placement Service.

There is also the Brunel Entrepreneurs Society, one of the largest and most dynamic student societies on campus. This network of outgoing individuals are continually seeking to develop their interpersonal and business skills. Whether it is working for a top company, starting your own business or just improving your skill set, you can gain valuable knowledge by joining the society.



Ed studied Business and Management and is now an Investment Appraisal Analyst for the Royal Mail.



I am part of a team responsible for the appraisal of investment projects and monthly reporting of the authorised projects spend to the Executive Committee. I was headhunted by the Financial Control Director to lead a project to improve processes.

I enjoyed many parts of my degree at Brunel. The variety of modules offered insights into areas of interest in both an academic and career sense, and gave a very good grounding in business and working in industry.

My placement year was invaluable in gaining experience and putting what I had learnt into practise. It helped me develop contacts and knowledge that were integral to my dissertation and helped greatly when looking for a graduate career at a difficult time with the recession in full swing.





Working while you study

At Brunel, we understand that you may well need to work while you study, both to ease financial worries and to develop your skills. The Job Shop, part of the Placement and Careers Centre, helps hundreds of students to find part-time and vacation work. There are plenty of high-quality vacancies on campus, in the local area, and further afield. Last year, students collectively earned over £750,000 from on-campus jobs alone! Some examples of the types of jobs you could get on campus include Student Ambassador (Marketing, Widening Participation), Employability Representative, Halls of Residences Student Mentor, Clerical Assistant or Brand Manager to name but a few.

Brunel Volunteers

Brunel Volunteers co-ordinates volunteering opportunities for students who want to improve their skills and employability. For more information on opportunities available, visit www.brunelvolunteers.com

- Brunel Volunteers is committed to supporting, enabling and celebrating volunteering. Based on campus, Brunel Volunteers works with local community organisations to identify and promote a diverse range of volunteering opportunities for students
- Brunel Volunteers offers a variety of volunteering opportunities from befriending, fundraising and sports coaching, to subject-specific volunteering and stewarding
- If you volunteer you will receive recognition of your efforts through the hours-based Volunteers Award, as well as getting an invitation to the Annual Volunteering Dinner
- Volunteering gives you an opportunity to make a difference to people's lives, by using your skills and experience to enrich the local community
- Volunteering is also a great way to develop key transferable skills which employers look for. It also adds another interesting element to your CV





Campus life

Brunel is a campus-based university, so virtually everything you need is moments away. You are never more than a 10 minute walk from halls of residence, catering, social and sports facilities, lecture theatres, the Library, Computer Centre or welfare services.

Brunel boasts the kind of welcoming atmosphere that so many other universities lack. The campus environment has a relaxed feel, and helps create a strong student community that flourishes as a result of living, studying and socialising in one location.

- All the essentials are available on campus, including a bank, pharmacy and shop
- The University hosts a regular market including fruit and veg stalls, fresh fish, eggs, sweets, books and more
- You have access to a number of study spaces, some of which are open 24/7
- Hungry or thirsty? There are many catering outlets across campus, including Subway and Proud to Serve Costa
- Whether you fancy a night out in The Academy, a game of pool in Loco's or a chat over coffee, there are plenty of places in which to have fun, catch up with friends and unwind





The best of city and country

Brunel is located in Uxbridge, a compact and friendly town on the edge of West London. Uxbridge town centre is just a 20 minute walk or short bus ride from the heart of the campus, and is packed with more than 300 shops, a multiplex cinema, dozens of bars and restaurants and a £3 million nightclub which runs a number of very popular student nights.

EASY ACCESS TO CENTRAL LONDON

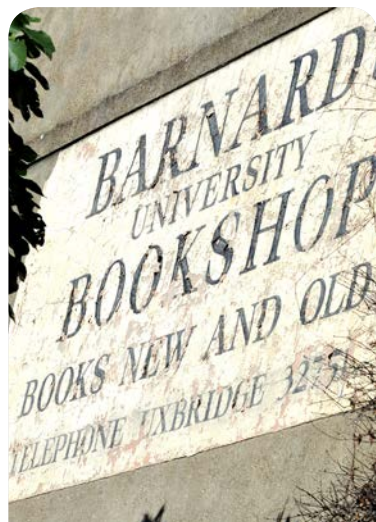
If you want to experience one of the greatest cities in the world, but are daunted by the high cost and bustle of living there, then Brunel offers an ideal compromise. Our Greater London address means you can access the best work placements and job opportunities. Not only is London the heart of the financial, commercial and creative sectors, but international organisations such as Apple UK, Coca Cola, Parexel, Xerox, Centrica, Hasbro, BT and GlaxoSmithKline are based in and around Uxbridge. You will also benefit from receiving a London-weighted maintenance loan without the burden of central London living costs.

THE COUNTRYSIDE ON YOUR DOORSTEP

One of Brunel's best-kept secrets is its proximity to the Grand Union Canal and to part of the Colne Valley Park, consisting of miles of woods, walkways, lakes, rivers and nature reserves, and only a 15-minute walk away.

BRUNEL BY TUBE

Travelling from London to Uxbridge is very straightforward – the town is at the end of the Metropolitan and Piccadilly lines on the London Underground, and overground trains from West Drayton (a short bus-ride from campus) take you to Paddington in just 20 minutes.





Promise Phillips

PRESIDENT, UNION OF BRUNEL STUDENTS



The Union of Brunel Students is run by students for students. Representation and democracy are at the heart of what we do. We represent the needs of our students to the University, to the local community and even the Government. There are so many different opportunities to get involved with UBS, ranging from clubs and societies to radio presenting, student representation, volunteering and even organising our big events.

The Union organises Freshers' Week, and with numerous social events and activities you'll make friends before you know it and acquire skills that boost your employability. Then to finish the year off we organise the FACE festival, with live music, BBQs and more! Brunel is truly a unique community with fantastic opportunities.



The Union of Brunel Students (UBS)

THE STUDENTS' UNION

Social life on campus revolves around the Students' Union, whose student-elected staff help provide you with the best possible university experience. You are encouraged to take part in university activities, organisation and decision-making at all levels.

The Union of Brunel Students (UBS) facilitates activities and represents the interests of all students, and encourages everyone to play an active part in its affairs. You will almost certainly make use of some of its wide range of amenities and services, run by an elected group of students and full-time professional staff. You may also like to get to the heart of the organisation's democracy by becoming involved in its day-to-day running through the Student Assembly or the Trustee Board.

The Union is a not-for-profit charity and its income-generating services subsidise its non-trading activities such as clubs and societies, the Advice and Representation Centre, and campaigns ranging from sexual health to alcohol awareness and crime prevention.

INFLUENCE YOUR STUDIES

The President and Vice-Presidents are elected student representatives who sit on both the governing bodies of the University – Council and Senate. You can be elected to academic committees and School Boards where you will be in a position to influence your studies on issues such as course structure, timetabling and other academic matters. The Student Representation Scheme, run by the Students' Union, provides advice and training to over 350 reps, enabling you to make the most of these positions. Your opinions may also be sought through questionnaires on your course as a whole, on individual modules, or on the University's services.

CLUBS AND SOCIETIES

The Students' Union is proud of the diversity of clubs and societies that you can join and even help run – everything from Animé Society to Snow Club. If your interests are not represented, we'll help you start your own group.

NIGHTLIFE

Brunel's nightclub, the Academy, caters for all musical tastes. Roll Deep, Tinchy Stryder, Skepta, Devlin, Big Brother, the Holloways and Wheatus have all played at the Academy in recent years, with DJ sets from Westwood, Trevor Nelson, Shy FX, Hed Kandi and Pendulum. Our urban scene attracts some of the best talent in London. You can also check out up-and-coming comedians, hone your karaoke and pub quiz skills, or even organise your own nights to raise funds for your club or society.

STUDENT MEDIA

The Union keeps you up-to-date with what's happening through its free student newspaper, LeNurb (that's Brunel backwards!), Radio Brunel and the Union website. They are always on the lookout for fresh journalists, designers and DJs to contribute and keep things running.



brunelstudents.com





Food and drink

Brunel has recently updated many of its catering facilities and social spaces, including the introduction of popular brands such as Subway, Costa and Starbucks, so there are plenty of options for those wanting to grab a bite to eat or go for a drink or two.

Hungry? Breakfast, lunch and dinner can be found in a number of outlets across campus. From burgers and curries to salads and sandwiches, there is something to suit all tastes and budgets, with vegetarian options, halal, and frequent offers and deals. Whether you want to catch up with friends between lectures for a coffee and cake or to meet for drinks in the evening, Brunel has plenty to offer.

Social Kitchen Located at the heart of the campus, Social Kitchen offers a variety of unique food 'destinations'. It is open from 8am for breakfast with cereal or hot food to get you going. There's plenty of choice for lunch and dinner too from hot meals to salads and sandwiches.

The Mezz This contemporary dining and social venue offers a range of food including curry, burgers and triple-decker sandwiches, plus a bar serving hot drinks and cocktails as well as the usual soft drinks, beers, wines and spirits.

Proud to Serve Costa The popular high street coffee brand is now available on campus, and the café also offers cakes, pastries, sandwiches, fruit, crisps and more.

Aspretto Located in the Lecture Centre, Aspretto is perfect if you want to grab a coffee and snack between lectures to keep you going.

Beactive Hungry after a work-out? Beactive in the Sports Centre is the place to go to recharge after a workout or socialise with friends. It serves healthy meals and lighter snacks.

MetroBite This café serves Starbucks drinks alongside a range of pastries, cakes, sandwiches and salads in Brunel's new Eastern Gateway Building.

Subway Fresh tasting sandwiches, salads and more.

Loco's Grab a bite to eat with your friends or enjoy a night out in Loco's, a bustling bar serving a range of alcoholic and non-alcoholic beverages, snacks and meals.





Accommodation

Brunel's halls of residence have been transformed in recent years as part of a £48 million investment programme. All our halls provide high quality, modern facilities and they are all located on campus.

- Our 4,531 rooms are divided into 34 halls of residence, including 17 in the spectacular Isambard Complex, completed in 2008
- Accommodation is guaranteed for all new UCAS main scheme first year undergraduates, including those from the local area
- All our halls are on campus, meaning you are never more than 10 minutes away from the teaching, social and sporting facilities
- Most rooms are en suite, but you can also choose our standard halls to suit your personal budget
- All our rooms are single, so you will not need to share, although studio flats are also available for co-habiting couples
- All rooms offer a free network connection with wireless access, through which you can access the Internet at no extra cost (with some limitations and subject to the Computer Centre's Terms and Conditions)
- Specially-adapted rooms are available for students with disabilities – for more information, see page 40

We strongly recommend that you live on campus in your first year, so you can make the most of what university life has to offer. All offer holders will be sent an email in January from the Accommodation Office with details of how to apply for a room. All you need to do is submit an application form online.

RENT FOR 2012/13 (CHECK THE WEB FOR 2013/14 RATES NEARER THE TIME)

- En suite rooms laid out in flats: £119.77 per week
- En suite rooms laid out on corridors: £117.74 per week
- Standard rooms: £94.01 per week
- Studio flats in the Isambard Complex: £180.04 per week (available to co-habiting couples only)

Rent rates include heating, lighting, water and standard insurance. Your lease period is 36 weeks.

All halls are self-catering, with spacious, well-equipped kitchens. There are also many food outlets across campus.

Residences Student Mentors and Senior Mentors are employed by the University to support and advise new resident students and to promote a sense of community within the University. View the accommodation video at www.brunel.ac.uk/services/accommodation

Not only is our accommodation good value and high quality, but it also benefits from the highest standards of service. Brunel University is signed up to the UUK Code of Practice, which outlines best practice and provides benchmarks for the management and quality of student housing in the Higher Education sector.

WHAT IF I WANT TO LIVE OFF-CAMPUS?

Brunel Student Homes can give help and advice about renting in the private sector, and there are various options available depending on your requirements:

- Through the Head Leasing Scheme, Brunel Student Homes rents properties from local landlords and then rents them on to groups of students
- Private landlords advertise properties through Brunel Student Homes. These have to meet minimum basic requirements and provide the required certification before they can be advertised. Most are also inspected by a member of the team
- For those who are looking on their own to live with other students, there is a notice board in the office where students can place adverts for rooms available or rooms wanted. Landlords also advertise rooms in their homes on the Brunel Student Homes website

Average rents for the area are within the region of £85 to £100 per week for a room. For more information on living off campus, visit www.brunel.ac.uk/studenthomes





Support, health and wellbeing

For many students, university will offer a first true taste of independence. You have to handle your own finances, organise your own workload, and find somewhere to live. Whatever your background – from students getting used to a new country and culture to those living at home while they study – you may find that becoming an undergraduate throws up a lot of questions.

Practical support and advice are freely available to all Brunel students, no matter what the problem may be. Throughout your course, you will have access to all the support you need to manage academic, financial, employment-related, administrative, legal, pastoral and accommodation issues.

SUPPORT WITHIN YOUR SCHOOL

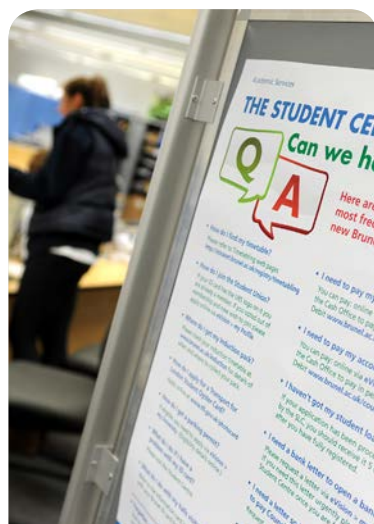
When you arrive at Brunel you will be assigned at least one personal tutor from your academic School, who will be your main point of contact for academic matters, such as module choices and work placements. As you settle in, you will develop many other networks and contacts who will continue to support your academic development. Many Schools organise social events to help you get to know them and each other.

STUDENT ADMINISTRATIVE ENQUIRIES

The Student Centre, based at the heart of campus, is available to provide advice and support throughout your time at Brunel. Student advisors can help with a wide variety of administrative enquiries including: enrolment; student records; finance; fees and funding; student letters; visa applications; general accommodation information; module selection; graduation enquiries; and student ID cards.

EXTERNAL AND LEGAL ISSUES

The Advice and Representation Centre (ARC), part of the Students' Union, is staffed by professional advisors and offers information, advice and representation on legal issues such as housing, employment, money, benefits and finance as well as University-related issues. The ARC is independent, free and confidential and holds the Community Legal Service Quality Mark.





MEDICAL CARE

Our on-site NHS Medical Centre can be used by all students, staff and members of the public who live within the Practice catchment area and who are registered with the Practice. The Centre is open throughout the year, with a walk-in surgery each weekday during term-time. Students who do not register will be seen in an emergency. The University does not provide dental services, so you should have a check-up before you arrive and make alternative arrangements.

COUNSELLING

Counselling is free to all Brunel students. We offer emotional and personal support for any issue, such as stress, depression, relationship difficulties, bereavement and any other problem that may be getting in the way of your studies or your enjoyment of university life. Appointments and weekday drop-in sessions are available all year round. The service is confidential unless someone is at risk of serious harm.

We also have a helpline where you can leave a message, and the duty counsellor will ring you back as soon as possible. All members of the core team are professionally qualified, and all counsellors, trainees and associates work in strict accordance with the British Association for Counselling and Psychotherapy (BACP) Ethical Framework, and the Brunel University Counselling Service Code of Practice.

www.brunel.ac.uk/life/welfare/counselling-service

THE MEETING HOUSE

The Meeting House is a pastoral, spiritual and community-building resource for all at Brunel. It provides a dedicated space where you can slow down, enjoy the peace of the Quiet Room or just relax over a cup of fairtrade tea or coffee in the lounge area – all for free!

The Meeting House team can offer a listening ear and personal help and advice as well as spiritual support. Chaplains from the Christian, Muslim, and Hindu faiths are available, and you will always be met with a warm welcome and a respectful attitude.

Many different student groups use the Meeting House for worship, meetings and social activities. In an environment driven by many pressures on your time, the Meeting House is one place where you don't need to make an appointment – simply drop in.



www.brunel.ac.uk/life/lifestyle/faith-and-religion

WIDENING PARTICIPATION

Brunel has a longstanding and highly successful Widening Participation (WP) strategy which aims to attract young people from non-traditional backgrounds to aspire to, enter and succeed at university. Brunel students are invited to assist the WP team by becoming WP Ambassadors, working with visiting groups of school and college students on campus or in their own institutions. The team also provides support to retain WP undergraduates through pre-entry and induction events as well as its professional mentoring schemes.

To further support students under-represented at Brunel, the WP team also partially finances a range of central student support teams, such as the Counselling Service, Library, Disability and Dyslexia Service and Placement and Careers Centre.

MENTORING

Professional mentoring for Brunel undergraduates began more than seven years ago with the National Mentoring Consortium programme for Black and Asian students. It has since expanded to include other students under-represented in higher education, for example students with disabilities, care leavers and students first in their family to attend university. Students are matched with mentors from the public and private sector and, in regular meetings at the mentor's place of work, they work towards personal and professional goals and graduate-level employment.

BRUNEL'S COMMITMENT TO CARE LEAVERS

Brunel has been reawarded the Buttle UK Quality Mark for Care Leavers in recognition of the University's work to support young people who have been in the care of a local authority and who aspire to study in higher education.

To achieve the Quality Mark, awarded by the children and young people's charity Buttle UK, the University demonstrated its continued commitment to providing care leavers with support and advice both before they arrive at Brunel and during their studies. Care leavers who apply to Brunel have a named contact at the University who can help with the application and admissions process, and once they arrive, they can attend a special pre-sessional induction event. They also have the option to live in campus accommodation all year round, and have access to the Brunel Widening Participation Mentoring schemes.

Brunel was first awarded the Buttle UK Quality Mark in 2009, and it has now been reawarded for a further three years until November 2015.

For more information, visit www.brunel.ac.uk/about/administration/access-and-widening-participation



BUTTLE UK



The Disability and Dyslexia Service

Brunel's Disability and Dyslexia Service (DDS) has received national awards and accolades in recent years, reflecting the quality of the University's support service. This has ranged from a Times Higher Education award for Outstanding Support for Disabled Students to a Student Led Teaching Award presented to the service to recognise significant contribution to the student experience. The University campus and facilities are recognised as some of the best in the country for disabled students.

HOW CAN WE HELP?

The DDS offers advice and support to disabled students, including those with dyslexia and other specific learning difficulties, mental health conditions, Asperger syndrome, mobility and sensory impairments and unseen disabilities such as epilepsy, diabetes, arthritis and sickle cell anaemia. A wealth of specialist resources, knowledge and practical support is available, including:

- a team of Disability and Dyslexia Advisers
- an Assistive Technology Centre (ATC) providing up-to-date specialist technology, training and equipment
- help with applying for Disabled Students' Allowances
- screenings and diagnostic assessments for specific learning difficulties
- loan of key equipment including digital recorders and assistive listening devices
- provision of note takers, study skills tutors, mentors and other support workers
- exam adjustments and extended library loans
- adjustments to on campus accommodation. This might include fully automated access for wheelchair users, rooms with adapted en suites and kitchen facilities, deaf alerting alarm systems, and accommodation for personal carers
- on-site needs assessments and IT training at the West London Assessment Centre (WLAC)

Support is provided and organised in negotiation with each student to ensure that individual needs are considered and met. The service is confidential and details are only passed on with each student's consent, and then only to ensure necessary support is recommended.

To find out more about services for disabled and dyslexic students, meet a member of the DDS or have a tour around campus, please contact:

📞 +44 (0)1895 265213

✉ disability@brunel.ac.uk

🌐 www.brunel.ac.uk/disability

DISABLED STUDENTS' ALLOWANCES (DSA)

Disabled Students' Allowances (DSA) can help to pay the extra costs a student may have on their course as a result of a disability, mental health condition or specific learning difficulty (such as dyslexia). For more information about eligibility for DSAs and the range of help available please visit www.gov.uk/disabled-students-allowances-dsas or for NHS-funded students, visit www.nhsbsa.nhs.uk/Students/969.aspx

West London Assessment Centre (WLAC)

The WLAC is a fully accredited, purpose built assessment centre and can be used by students attending any university who are eligible for Disabled Students' Allowances (DSA). The WLAC provides the needs assessments required by students claiming DSA. These allowances can fund assistive technology, support workers such as study skills tutors, note takers, mentors and BSL communicators as well as many other forms of support. The WLAC can also provide IT training in the use of any assistive technology provided. To find out more or to arrange a needs assessment, please contact:

📞 +44 (0)1895 266704

✉ assessmentcentre@brunel.ac.uk

🌐 www.brunel.ac.uk/wlac





Brunel International

Brunel is proud to be home to over 2,500 international students from over 110 different countries who play an essential part in creating our diverse and cosmopolitan university. Brunel International, a dedicated international student centre within the University, offers a range of services to support international students.

Our proximity to London, one of the world's most multicultural cities, is complemented by a friendly campus environment offering guaranteed accommodation in your first year. In addition, the UK's main international airport, Heathrow, is only 15 minutes away by car.

Brunel International is here to help during every stage of your life and studies at Brunel. As well as access to the resources available to all our students, such as state-of-the-art study facilities, careers advice, a multi-faith meeting house and personal, practical and study support, international students can also benefit from a range of other support services:

- pre-departure and arrival information
- a 'Meet and Greet' service from London Heathrow airport
- a tailor-made international student orientation programme
- a range of day trips to places of interest in the UK
- the Host Programme, which gives students the opportunity to spend a weekend in the home of a British family, learning about the UK way of life
- an active International Student Society
- language and study support
- support and advice throughout the year from trained support staff
- advice for you and your family on the UK's immigration scheme





THE APPLICATION PROCESS

All applicants, including those from overseas, should apply through the Universities and Colleges Admissions Service (UCAS) and must prove their proficiency in the English language. More information about UCAS is provided on page 206.

If you need extra support or advice in completing your application form, you may wish to contact UCAS directly. In addition, Brunel has a number of representatives throughout the world who can assist with the application process. For more information, visit the Brunel International web pages: **www.brunel.ac.uk/international**.

ENGLISH LANGUAGE REQUIREMENTS

You may need to gain further qualifications before beginning your degree course, especially to improve your proficiency in English. Brunel offers a variety of courses to help you reach the necessary standard. Our International Pathways and Language Centre (IPLC) runs a number of English Language courses, and you should complete and pass the necessary course before starting your degree. Courses are competitively priced and taught in small classes. For more information, visit the IPLC's website at **www.brunel.ac.uk/international/englishcourses**.

The IPLC also provides classes and tutorials in English for Academic Purposes (EAP) while you are studying for your degree, helping you to improve your skills in academic writing, seminars and presentations, research, academic reading and English pronunciation and grammar.

Modern Foreign Language Courses are also available at the IPLC – see page 13 for more information.

PATHWAYS TO UNDERGRADUATE COURSES AT BRUNEL

The London International College of Business and Technology Ltd (LIBT) is Brunel University's on-campus pathway provider, offering full fee-paying overseas students an alternative entry route into certain undergraduate degrees. Students who successfully complete their stage of study at LIBT are guaranteed a place at Brunel University. Pathways are available in Business and Management, Information Systems and Computing, Economics and Finance and Law.

● Undergraduate Stage 1 (University Foundation)

This programme is designed to help students better understand what is expected from them at university and will prepare students for their chosen degree. Successful completion of this stage enables students to join Stage 2 (First Year University Studies) or Year 1 at Brunel University (depending on the course of study).

● Undergraduate Stage 2 (First Year University Studies)

During this programme students will experience the first-year curriculum of a Brunel University degree, but in smaller class sizes and with extra academic contact hours. The teaching and learning experience will enable students to fully develop their knowledge and understanding of each module to prepare them for entry into Year 2.

For more information visit www.brunel.ac.uk/libt or email info@libt.brunel.ac.uk



Fees and funding

Fees

This information is correct at time of going to press.
For up-to-date information on fees please check the
website: www.brunel.ac.uk/courses/ug/fees

Brunel University charges a fee of £9,000 per annum for Home/EU students on its full-time undergraduate degree programmes. The University believes that this fee level is necessary to maintain its strong focus on research-led teaching and the employability of its students. It also recognises that Brunel University must continue to invest in its facilities and curriculum in order to meet the needs of its students.

FEES FOR SANDWICH PLACEMENT YEAR

If a student chooses to take a four-year sandwich placement degree, the total fee for the placement period(s) will be just £1,000. This reduced fee is charged during sandwich years because of the continued support and assessment structures that form an integral part of the placement. Students from under-represented groups will receive a fee waiver for the £1,000 fee, and placement bursaries will also be available in certain cases. We will also be funding internships in some cases to assist with the employment prospects of our students.

FEES FOR A FOUR-YEAR MASTER'S COURSE

To encourage high-performing students from under-represented groups to apply for, or transfer to, our four-year integral undergraduate Master's degrees in Mathematics and Engineering, we will offer successful candidates a fee waiver of £3,000 for the fourth year of study. This reduces the cost to £6,000 – the national basic fee – and encourages such students to pursue excellence in Science, Technology, Engineering and Mathematics (STEM) subjects.

PART-TIME COURSES

The fee for part time courses is 75% of the full time fee, payable in each of four years.

Funding

Brunel University has over 700 scholarships available for students entering the University in 2013. See the Web for further information and Terms and Conditions.

www.brunel.ac.uk/scholarships

- **National Scholarship Programme (NSP)**

Worth £3,000

The NSP is a Government-backed scheme to provide additional financial support to under-represented students from households with an income below £25,000 per annum. It is funded jointly by the Government and the University.

Annual Value: £2,000 fee waiver plus £1,000 taken either as (a) an additional fee waiver or (b) discount on the cost of on-campus accommodation or (c) a cash award

How many: 252 new entrants funded by the Government + 252 funded by Brunel

For how many years: Three years, subject to meeting progression criteria

- **Academic Excellence Scholarship**

Worth £9,000

The Academic Excellence Scholarships will be awarded to students achieving three A grades at A level (and limited equivalencies).

Annual Value: £3,000 fee waiver

How many: up to 150 entrants each year

For how many years: Three years, subject to meeting progression criteria

- **Local Boroughs Scholarships**

Worth £18,000

The Local Boroughs Scholarships will be awarded to 30 students who attended a maintained school or college in one of the six London Boroughs with whom the University operates Widening Participation Partnerships.

Scholarships will be awarded on the basis of academic excellence and to students who meet certain under-represented criteria.

Annual Value: £5,000 fee waiver plus £1,000 taken either as (a) an additional fee waiver or (b) discount on the cost of on-campus accommodation or (c) a cash award

How many: 30 new entrants each year

For how many years: Three years (subject to meeting progression criteria)

- **Brunel Alumni Scholarship**

Worth £18,000

Funded by alumni donations, Brunel Alumni Scholarships will be awarded to five applicants who achieve the highest number of UCAS tariff points and who meet certain under-represented criteria.

Annual Value: £6,000 cash award

How many: Five new entrants each year

For how many years: Three years (subject to meeting progression criteria)

- **Urban Scholarships**

Worth £9,000

Urban Scholarships are non-repayable cash awards of up to £3,000 per year for students who have attended the Urban Scholars programme at Brunel University for a minimum of two years, who meet the conditions of their offer and who are eligible to receive a tuition fee loan from Student Finance England and have consented to the sharing of data submitted to the Student Loans Company.

Annual Value: up to £3,000 cash award

How many: all new entrants who meet the eligibility criteria

For how many years: Three years (subject to meeting progression criteria)

- **Placement Scholarship**

Worth £1,000

The University will provide a fee waiver of £1,000 for the sandwich placement year (the whole tuition fee for that year), for all students who meet the eligibility criteria.

Annual Value: fee waiver of £1,000 for sandwich placement year (this covers the whole tuition fee for that year)

How many: all new entrants who meet the eligibility criteria

For how many years: One year – placement year only (this will be year 3 for students on thick- and thin-sandwich courses and year 4 for students on MEng, MMath or MFinMath sandwich courses)

- **Mathematical Sciences Scholarship**

Worth £3,000

The Mathematical Sciences Scholarship is open to all students who choose to undertake any Mathematics degree programme in the Department of Mathematical Sciences.

Annual Value: £1,000

How many: 10 new entrants each year

For how many years: Three years. MMaths students will be eligible for four-years of funding. Students out on a work placement year will not receive an award for that year.

For full application details, eligibility criteria and terms and conditions, visit www.brunel.ac.uk/courses/ug/fees

Other forms of funding

Some students are able to get extra help towards their living costs over and above the loans, grants and bursaries described above. The following awards and allowances do not have to be paid back. Please check the Web for details.

- Students claiming Disabled Students' Allowances
- Those claiming the Special Support Grant
- Students on professional health courses
- Social Work students
- Students training as teachers
- Students with dependants
- Students who experience financial difficulties during their course

USEFUL WEBSITES

- Comprehensive information on the Government's student finance package, including your portal to register and login to student finance online services
www.gov.uk/browse/education/student-finance
- General information including help with budgeting and living costs
www.ucas.com/students/studentfinance
- Information and rent rates for Brunel's campus accommodation
www.brunel.ac.uk/services/accommodation
- Local transport costs and Oyster card information
www.tfl.gov.uk/tickets/oysteronline/2732.aspx

EARNING WHILE YOU STUDY

At Brunel, we understand that you may need to offset your university costs with part-time or vacation work. Our sandwich courses often involve paid placements, which also help you to command a higher salary after graduation, and the Job Shop helps students find part-time work.



www.brunel.ac.uk/services/pcc/about-us/people/job-shop

Financial information for UK/EU students

PAYING YOUR FEES

Arrangements for the payment of tuition fees must be made at or before enrolment for each academic year. UK/EU students can pay in a single instalment at or before enrolment, or in six instalments between enrolment and March. Overseas students can pay in a single instalment at or before enrolment, or can pay 60% of the balance at enrolment and the remainder in January. For most students, full payment by the designated Registration date will attract a 2% discount.

There is no entitlement to any fee reduction or refund if a student withdraws during the year. The University may exceptionally allow refunds to self-supporting students who withdraw during the first few weeks of their course.

The University reviews fees annually and reserves the right to change them.

OTHER EXPENSES

The University reserves the right to make certain additional charges for items such as deposits on equipment, registration fees to external bodies, late registration fees, resit examination fees and charges for lost ID cards. If you live off campus, you will also have other expenses such as Council Tax and bills, and you should take this into account when planning your finances.

Financial information for international students

DEPOSITS

Applicants holding an unconditional offer can guarantee their place to a direct entry undergraduate course. A course fee deposit of £3,000 is required from all students along with a £400 deposit to reserve accommodation. Course fee deposits are non-refundable unless a visa application is refused and evidence of this can be provided. Accommodation deposits are also non-refundable unless notice in writing (email or fax) is given to the Accommodation Office seven days prior to the commencement of the tenancy agreement.

OVERSEAS SCHOLARSHIPS

A number of international scholarships have been awarded to overseas students in recent years and we hope to continue this scheme. Applications are only accepted from candidates holding an offer of a place, who will automatically receive further details. Undergraduate students taking UK qualifications such as A-levels or International Baccalaureate are eligible to apply for the Academic Excellence scholarship.

CLASSIFYING STUDENTS AS 'HOME' OR 'OVERSEAS'

The University is responsible for classifying students as 'home' or 'overseas' for fee purposes. It must follow complex rules, and the following provides only an outline of those student groups who may be considered eligible for 'home' fee status, at the time of writing:

- UK residents with settled status (Indefinite Leave to Remain) and three years' continuous ordinary residence
- EU (including UK) nationals, their spouses or children under the age of 21 with three years' continuous residence in the EU
- individuals with formal UK refugee status or their spouses/children, who have been ordinarily resident since gaining such status
- individuals who have been granted Humanitarian Protection by the UK Government
- UK residents and EU nationals temporarily absent from the EU due to temporary employment overseas
- students on reciprocal exchange programmes

The University reserves the right to make full and final decisions as to fee status at the time of application and Registration. The above is only a guide and applicants should not take it as forming any part of a contract with the University. This information and the legislation on which it is based may change from time to time, so applicants should not rely upon it. If you have any doubts about your likely fee status, you are strongly advised to contact Brunel Admissions prior to taking up your place.

SPONSORSHIP

If you are a sponsored student (ie you are sponsored by a company, organisation or charitable trust, not by family members, guardians or friends), a copy of the documents confirming your sponsorship should be presented before Registration and before re-enrolment each year. You will not need to submit a deposit for course fees if this information is supplied.



Check the Web for up to date course, entry criteria and fees information. For more specific information on Joint Honours courses, including entry criteria, please also check the Web.



www.brunel.ac.uk/courses

Subject Areas

Anthropology	54
Arts.....	58
Business	80
Civil Engineering	86
Design	92
Economics and Finance.....	98
Education.....	106
Electronic and Computer Engineering.....	110
Health Sciences and Social Care.....	128
Information Systems and Computing	142
Law.....	148
Mathematical Sciences	152
Mechanical Engineering	162
Politics, History and International Relations.....	176
Psychology.....	182
Sociology and Communications.....	186
Sport, Health and Exercise Sciences	192
Programmes with an Integrated Foundation Year	196

Degree and course structure

Degree structure

AWARDS

Brunel University awards the following first degrees: Bachelor of Engineering BEng, Bachelor of Science BSc, Bachelor of Arts BA, Bachelor of Music BMus and Bachelor of Laws LLB. The following integrated Master's degrees: Master of Engineering MEng and Master of Mathematics MMath. BSc Information Systems, Computing and Mathematics with an Integrated Foundation Year and BEng Engineering with an Integrated Foundation Year are available for students who do not meet the standard criteria for Level 1 entry.

First degrees are usually awarded with honours, classified into first class, second class (with upper and lower divisions) or third class. You are admitted to the University on the assumption that you will achieve an honours degree. Some Schools offer a less demanding ordinary degree course if your performance proves not to be of honours standard before the final year.

THE THREE-PART YEAR

Brunel's course structure is based on three periods of study per year. There are two teaching terms of 12 weeks each, running from September to December and from January to Easter. There is then a third, shorter term for revision, examination and assessment. Students who take a four year sandwich course will spend a further period in either one or two work placements, depending on whether the course offers a thin- or thick-sandwich route. The tables opposite summarise this structure.

There are some exceptions to this, for example:

- Physiotherapy, Occupational Therapy and Specialist Community Public Health Nursing: students may take clinical work experience during vacations (see pages 132-135 and 138).
- Social Work: all students spend a proportion of each year in the field, and those following the part-time employment route work according to calendar rather than academic years (see page 136).

PART-TIME COURSES

Some degrees are available on a part-time basis – all available modes of study are listed on each course page. Part-time students normally take up to 80 credits per academic year, though this may vary according to your circumstances.

Course structure

THREE YEARS FULL-TIME

Students following a three year full-time route study for six academic terms, with a standard summer vacation.

Year	Level	Term 1	Term 2	Term 3	Summer
		<i>Sept – Dec</i>	<i>Jan – Easter</i>	<i>Easter – Mid-May</i>	<i>Mid-May – Sept</i>
1	1	Academic Period 1	Academic Period 2	Assessment	Summer vacation
2	2	Academic Period 3	Academic Period 4	Assessment	Summer vacation
3	3	Academic Period 5	Academic Period 6	Assessment	–

FOUR YEARS THICK-SANDWICH

The four year thick-sandwich route follows a similar pattern, but students spend the whole of Year 3 on placement.

Year	Level	Term 1	Term 2	Term 3	Summer
		<i>Sept – Dec</i>	<i>Jan – Easter</i>	<i>Easter – Mid-May</i>	<i>Mid-May – Sept</i>
1	1	Academic Period 1	Academic Period 2	Assessment	Summer vacation
2	2	Academic Period 3	Academic Period 4	Assessment	Summer vacation
3		Work Placement			
4	3	Academic Period 5	Academic Period 6	Assessment	–

FOUR YEARS THIN-SANDWICH

The four year thin-sandwich route involves two periods on work placements, which are likely to extend through the summer vacation. If you are taking a course approved by a professional institution, longer periods of work experience may give exemptions from some membership requirements.

Year	Level	Term 1	Term 2	Term 3	Summer
		<i>Sept – Dec</i>	<i>Jan – Easter</i>	<i>Easter – Mid-May</i>	<i>Mid-May – Sept</i>
1	1	Academic Period 1	Academic Period 2	Assessment	Work Placement 1
2	2	Work Placement 1	Academic Period 3	Assessment	Summer vacation
3		Academic Period 4	Work Placement 2		
4	3	Academic Period 5	Academic Period 6	Assessment	–

JOINT HONOURS DEGREES

Some subjects can be combined with a selected second subject to form a joint honours programme. Possible combinations are listed at the beginning of each subject area section, and on the course pages 54-199.

The proportion of credits you will be expected to attain in each subject varies according to your programme specification but, for a joint honours course rated at 360 credits, you must take a minimum of 160 credits in each of the two subjects.

Modules and credits, Teaching and assessment

Modules and credits

MODULE CHOICE

You select your modules before the beginning of each level. Your tutor can advise you about the choices available, and there are, of course, academic constraints to ensure that you do not follow a module for which you do not have the proper grounding. Occasionally, your timetable will also limit your choice. The structure may allow you, within the programme specification for your course, either to broaden the range of topics you study or to specialise in one particular area. Most degree courses contain compulsory modules in order to maintain the coherence of the course or to meet the requirements of professional institutions.

However, you may also be able to select other modules. Language modules may be available for credit on your course, or you may choose to take them for additional credit which does not contribute to your award (or just for fun!).

CREDITS

All Brunel's courses are made up of study and assessment blocks (modules) worth 10 to 30 credits each. Levels 3 and 4 may include a major project, worth up to 40 credits. You will build up these modules, usually gaining at least 120 credits per year, until you complete at least 360 credits to achieve an Honours degree.

There are some exceptions to this pattern:

- Thick- and thin-sandwich placements attract 120 further credits, so you will complete at least 480 credits in total. This structure leads to a separate degree award title, indicated on the relevant course pages (eg 'with Professional Development').
- Those undertaking an MEng qualification will study for a further year. This year, Level 4, will include advanced modules and group projects and you must complete at least 120 further credits.
- If you do not complete your degree programme, you may still be eligible to achieve a recognised qualification, depending on the number of credits you complete. Since each module has a credit value, Brunel is able to participate in national and international credit accumulation and transfer schemes.

Teaching and assessment

TEACHING

Most modules include formal lectures, seminars and tutorials. Courses in the applied sciences, health and engineering disciplines incorporate substantial amounts of practical or laboratory-based activity, including individual or group project work. Teaching methods are summarised on each course page. All modules allow time for you to learn on your own in private study or collectively in groups.

You may also participate in external activities such as research projects with external agencies and companies or visits to and by professionals in your chosen discipline. In your final year, you may complete a major project. This may be of an experimental, applied or theoretical nature or a combination of the three. If you are taking a sandwich course, your project will probably be connected with work undertaken during your placement(s). In some subjects, project work is developed by a team of students, each with a particular contribution to make.

Teaching and learning methods are designed to develop and improve transferable skills which will enhance your employability.

ASSESSMENT

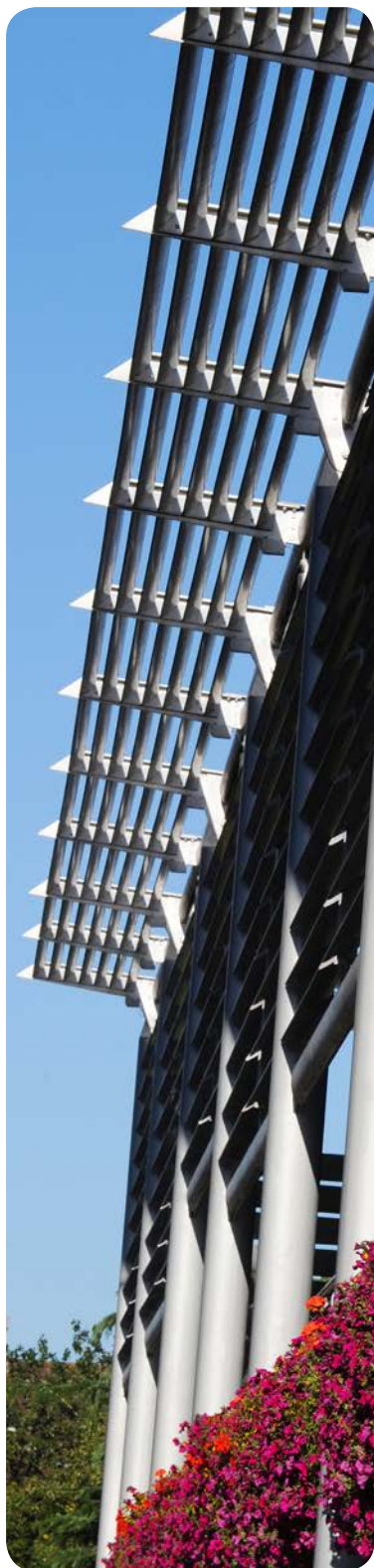
The intended learning outcomes for each module (what you are expected to know and to be able to do when you have completed it) are given in detailed assessment or study block outlines (module outlines) to help you assess your own learning targets.

Many courses are assessed by a combination of continuous assessment (including, for example, essays, reports, practicals and presentations) and end of year examinations, to test both your knowledge and skills. Assessment methods are summarised on each course page.

The proportion of marks gained through each method varies according to the module and level of study. To progress from one level of a programme to the next, you will need to fulfil the necessary requirements for that level, taking into account any opportunities for reassessment that may be offered to you.

If you are taking a sandwich course, performance on work placements is also taken into consideration by the Board of Examiners. Professional practice in Education, Health or Social Work degrees is also assessed.

Final degree classification is usually determined by the results gained at Levels 2 and 3, including performance in your final year project.



Professional experience and accreditation

The modules you take for your academic course are only part of your learning process. Brunel places great emphasis on the practical and personal skills that are essential to graduates who want to find a good job.

If you choose the four year sandwich course – a degree pathway that integrates placements with academic study – you will have the opportunity to acquire valuable practical skills through extended work experience. Sandwich courses include an assessed placement worth 120 credits. If you are taking a full-time programme, you may still be able to gain practical experience – some Schools offer opportunities for work experience during term time, while for others (for example in the School of Health Sciences and Social Care) there may be regular placements in professional settings as part of your course. Whatever your career interest, you will find that graduate employers place a high value on relevant work experience, frequently rating it above even degree classification as a selection criterion. Whatever your subject, the Placement and Careers Centre can help you build appropriate experience, and your first year is an ideal time to start.

FINDING THE RIGHT SANDWICH PLACEMENT

The University collaborates closely with employers and works to ensure that academic study and professional experience complement each other, since both are part of a continuous learning process. Your academic tutor and the Placement Officers based in the Placement and Careers Centre will help you in your search for suitable placements and give guidance on the kind of experience best suited to your needs, but the responsibility for finding a placement is yours.

A placement should take account of your degree course, knowledge and previous experience. We try to ensure that you are engaged in work which is relevant to your degree and appropriate to your level of ability, and that you are given as much variety of experience as is practicable. A tutor will remain in touch with you throughout your placement. The University has contacts with several thousand employing organisations, including industry in both the public and private sectors, government departments, research

laboratories, local authorities, business and commerce. You will usually be supervised by a senior person in the establishment concerned.

You may be paid a salary by the organisation during your sandwich placement periods. Although you are unlikely to earn enough to fully finance yourself through the academic study periods, you may be able to offset a significant part of the cost of living. This in turn could go some way to reducing the amount you need to borrow as a student loan.

TRANSFERRING TO A DIFFERENT MODE OF STUDY

If you are registered for a sandwich course but have problems obtaining suitable placements, you may be able to transfer to a different mode of study. For example, you may be able to switch to a full-time mode from a thick-sandwich mode at the end of Level 2. Options vary from course to course, depending on the availability of different modes. You should therefore check the programme specification for your course when you register.

OPPORTUNITIES FOR SPONSORSHIP

Sponsored students usually have an established relationship with one organisation during their course, so they become familiar with the entire range of its activities. Many sponsoring organisations pay a bursary to their students during university-based periods, and there is often the opportunity to remain with the sponsoring company as a graduate. Some of Brunel's degree programmes encourage applicants to look for a sponsor prior to, or soon after, joining their course.

ACCREDITATION BY PROFESSIONAL INSTITUTIONS

A Brunel degree may bring particular advantages if you are contemplating a career in certain professions. Professional bodies accredit degree courses which they deem suitable for gaining admission to their ranks, and a large number of Brunel's courses are validated by these bodies. Check the course page to see whether this applies to you.

Aside from an accredited degree, membership requirements normally include a period of training in the relevant discipline. For Brunel students on sandwich courses, periods of work placement can contribute between six and sixteen months towards such training requirements, giving you accelerated entry to your chosen profession. Your School will help to ensure that any eligible work experience is registered towards accreditation, and you can check with your Admissions Tutor about requirements in your particular subject area.





Applying to Brunel

Applications for all full-time and sandwich first degree courses must be made online through the Universities and Colleges Admissions Service (UCAS).

Courses in the UCAS scheme are listed on the UCAS website. Visit **www.ucas.com** to apply, and for more information.

WHERE CAN I APPLY?

You can apply for 2014 entry online at **www.ucas.com** as an individual or as part of your school or college.

WHEN SHOULD I APPLY?

UCAS can start receiving applications from 1 September 2013 for entry in Autumn 2014. The normal closing date for the receipt of applications is 15 January 2014. UCAS accepts that some applicants, especially from outside the UK, may find this difficult, and you can still apply through UCAS up to the end of June. Universities and colleges may still consider your application, but the most popular courses may already be full. If you apply after the end of June, you will automatically go into Clearing, where you will be considered if there are still vacancies on the course. In Clearing you directly contact the universities and add the choice on your UCAS account once you have accepted an offer.

HOW DO I APPLY?

You may apply for up to five choices of institution/course on your UCAS form. You should not feel obliged to use all five choices if you do not need to. Your choices can be selected from any of the courses listed on the UCAS website, and you may, for example, mix both degree and non-degree courses if appropriate. If you wish to apply for more than one course at Brunel, you will have to make a separate entry for each choice.

There is no facility for you to express an order of preference, and all your applications will be treated equally. The institution code for Brunel is **B84 BRUNL**.

As well as choosing five institutions/courses, there are seven other sections to complete on the application: your personal details; additional information (for UK applicants only); student finance; your education history; your employment history; a personal statement; and a reference from your school.

If you need help or advice on your individual application, you can call the UCAS Customer Service Unit on **+44 (0)871 468 0 468**.

For other contact details, including phone numbers for applicants with hearing difficulties, visit **www.ucas.ac.uk/about_us/contact_us**

HOW MUCH DOES IT COST TO APPLY?

It currently costs **£23** to apply through UCAS, or **£12** if you only apply for one course. UCAS costs can vary each year. If you're applying through school or college, your teacher or lecturer will tell you whether you need to pay online with a card or bring in a cheque. If you're applying online as an individual, you can pay by credit or debit card.

HOW DO I APPLY IF I HOPE TO BE SPONSORED BY MY EMPLOYER?

If you are employed in industry, and hope to be sponsored by your employer to study on a course listed on the UCAS website, you must apply through UCAS in the normal way.

I HAVE A DISABILITY – WHY SHOULD I DISCLOSE THIS?

All disabled students who apply to Brunel are encouraged to disclose their disability when completing the UCAS form. This information is treated sensitively and is only used to help ensure our services and support can meet all new students' needs.

Students with disabilities are also strongly advised to apply for the **Disabled Student's Allowance (DSA)** prior to the start of their course. See page 41 for more information.

I AM A CARE LEAVER – WHY SHOULD I DISCLOSE THIS?

Brunel is offering a range of scholarships for care leavers so if you are a care leaver, please tick the appropriate box on your UCAS form in order to be considered for one of these. See page 47 for more information on Brunel scholarships.

I HAVE A CRIMINAL RECORD – CAN I STILL APPLY?

Having a criminal record will not necessarily bar you from studying with us. This will depend on the circumstances and background of your offences. For guidance notes for applicants who are ex-offenders, please see our Admissions Policy and annexes at **www.brunel.ac.uk/courses/ug/admissions_office/admissions**

Students applying for courses that involve regulated activity with children and/or vulnerable adults will be legally required to undertake a Disclosure and Barring Service check – see page 210 for more information.

HOW DO I APPLY FOR A PART-TIME COURSE?

Part-time applications should be made direct to the relevant school.

HOW DO I APPLY FOR A NON-DEGREE COURSE?

Students applying for full- or part-time courses that do not lead to a degree qualification should apply directly to the relevant School.

WHAT OFFER WILL I BE MADE?

Many applicants will have to gain qualifications before they can take up their place, and conditions will be set for grades needed (this is called a **Conditional Offer**). You may alternatively be made an **Unconditional Offer** if you have already attained the relevant qualifications. Any conditions set for an offer of a place not based on A-levels taken in summer 2014 must be fulfilled by the **9 August** prior to the planned date of entry. If you have any queries regarding this date, please contact the Admissions Office by email: **admissions@brunel.ac.uk**



Entry requirements

These pages provide further information about the general entry requirements listed under each course entry. There is flexibility in all our entry requirements, and all applicants will be considered on an individual basis.

GCSES

You must hold a minimum of five GCSE passes at Grade C or above by the time you start your studies at Brunel. However, in certain circumstances we may consider applicants who do not have five GCSEs or are taking them in summer 2014. For further advice on this please email admissions@brunel.ac.uk

Native speakers of English will be expected to hold a GCSE at a minimum of Grade C or equivalent in English. All other GCSE requirements are listed on the course page for your course.

Please note that if Maths GCSE is required, a GCSE in Use of Maths will not be accepted.

GCE A-LEVELS

Entry criteria are expressed on each prospectus and Web course page in terms of a minimum of three GCE A-level passes in appropriate subjects, normally achieved at one sitting. Please note that an equivalent combination of grades to that indicated on each course entry may be considered on an individual basis.

The required grades for your course must normally come from at least three full A-level passes, although candidates offering a combination of AS- and A-levels may be considered.

We welcome applications from students taking the Extended Project Qualification. AS-level scores will be incorporated into an A-level score in the same subject, so there is no double-counting.

GRADE RANGES

Some A-levels on course pages ask for grade ranges. In these courses conditional offers will always be made at the top of the grade range. If an applicant applies who has already taken their A-levels and has qualifications within the grade range we will assess the whole application including transferable skills in the Personal Statement and make a decision. If an applicant fails to meet their conditions of an accepted offer but is within the grade range we will re-assess the whole application including transferable skills in the Personal Statement and make a decision.

IRISH LEAVING CERTIFICATE

The University welcomes applications from students taking Irish qualifications. Entry criteria can be found on the Web page for your course in terms of a minimum of five passes at Higher Level in appropriate subjects, achieved at one sitting. Please note that an equivalent combination of grades to that indicated on each course entry may be considered on an individual basis.

SCOTTISH HIGHERS AND ADVANCED HIGHERS

The University welcomes applications from students taking Scottish qualifications. Entry criteria can be found on the Web page for your course in terms of a minimum of three Advanced Higher passes in appropriate subjects, achieved at one sitting. Please note that an equivalent combination of grades to that indicated on each course entry may be considered on an individual basis.

The required grades for your course must normally come from at least three full Advanced Higher passes, although candidates offering a combination of Highers and Advanced Highers may also be considered. Scottish Higher scores will be incorporated into Advanced Higher scores in the same subject.

BTEC

The University welcomes applicants offering a BTEC Level 3 Extended Diploma, and some courses also accept a BTEC Level 3 Diploma alongside an A-level or a BTEC Level 3 Subsidiary Diploma alongside 2 A-levels. Your Extended Diploma or Diploma must be in a subject related to the course you wish to study at Brunel, and you must achieve the grades specified on each prospectus and web course page, including any grades required in particular subjects.

INTERNATIONAL BACCALAUREATE DIPLOMA

The IBDP is considered for entry to all courses at Brunel. Offers are normally made in terms of gaining the Diploma with a total of at least 26 points, often including specified grades in one or more particular subjects.

The required number of points is listed on each prospectus and Web course page.

EUROPEAN QUALIFICATIONS

The University will normally consider candidates who have gained the European Baccalaureate with an overall score of approximately 75%. For other European qualifications gained in high school, please see the website for detailed information on each EU country:

 www.brunel.ac.uk/international/information-by-country





AQA BACCALAUREATE

The University welcomes applicants offering the AQA Bacc and recognises the benefits of the enrichment activity. However, offers are normally made on the basis of three A-levels, according to the criteria stated on each prospectus and web course page.

CAMBRIDGE PRE-U

Cambridge Pre-U Principal Subjects as well as the full Cambridge Pre-U Diploma are welcomed for entry to all courses at Brunel. Check the UCAS website at **www.ucas.ac.uk/students/ucas_tariff/tarifftables** for information on grade equivalence. Candidates will be considered on an individual basis.

OCR LEVEL 3 NATIONALS

The University welcomes applicants offering OCR Level 3 National Extended Diplomas, and some courses also accept a Level 3 National Diploma. Your Diploma must be in a subject related to the course you wish to study at Brunel. Check the UCAS website at **www.ucas.ac.uk/students/ucas_tariff/tarifftables** for information on grade equivalence. Candidates will be considered on an individual basis.

DISCLOSURE AND BARRING SERVICE (DBS)

Students on professional training courses in health, social work and education are required to complete an Enhanced Disclosure and Barring Service (DBS) application. This application costs £51.86 at the time of going to press, but is subject to change. The University will send you more information on this as part of your admissions process.

Email **DBS@brunel.ac.uk** for further information or access the latest information by visiting the Home Office website: **www.homeoffice.gov.uk/crime/vetting-barring-scheme**

OVERSEAS QUALIFICATIONS

Candidates are advised to contact Brunel Admissions to confirm the acceptability of all overseas qualifications or to look online:

www.brunel.ac.uk/international/information-by-country

admissions@brunel.ac.uk

+44 (0)1895 265519

ENGLISH LANGUAGE REQUIREMENTS

There are minimum English language requirements for all individuals. Native speakers of English should normally have a GCSE in English at minimum Grade C. Equivalent levels of English for non-native speakers are outlined on the web page for your course. In some cases, the University may ask you to prove your command of English.

 www.brunel.ac.uk/international/language/requirements

VOCATIONAL COURSES

Vocational qualifications will be considered on an individual basis. If in doubt about the acceptability of qualifications, please contact the Admissions Office.

 admissions@brunel.ac.uk

MATURE STUDENTS/NON-STANDARD APPLICATIONS

Brunel welcomes mature applicants and others with non-standard qualifications. Those without the required qualifications are encouraged to take an Access to Higher Education course, as these are accepted for entry to the majority of our degree programmes. Required Access entry profiles are listed on each prospectus and web course page. Access courses usually take one year to complete and can be studied full- or part-time at over 1,500 colleges across the country.

APEL

Accreditation of Prior Experiential Learning may be used for entry to any course and its use will determine what exemptions are possible. Any exemptions will be limited to two thirds of an undergraduate degree programme.

APL/CATS

You can also gain exemptions for skills and qualifications that you may already have acquired elsewhere (Accreditation of Prior Learning). Since all Brunel courses are credit rated, you can gain credit for courses pursued here or at other institutions via the Credit Accumulation and Transfer Scheme. You should write directly to the tutor of the course in which you are interested with full details of your previous study. Exemptions are normally only granted where the previous study or work experience is directly comparable with a specific Brunel course.

REQUIREMENTS FOR NON-DEGREE COURSES

Students applying for full- or part-time courses that do not lead to a degree qualification may have different or additional entry requirements from those listed above. Details are listed on the relevant Web and prospectus course pages.



Summary of terms

Important information to read before accepting an offer

In addition to the contractual information sections contained in the undergraduate prospectus such as course descriptions and financial and general information, and the disclaimer published here, your place with the University will be subject to the terms and conditions stated in our offer letter to you as well as also being subject to our Statutes, Council Ordinances and Senate Regulations and all University rules, policies and procedures from time to time in force (together our "terms"). Some of these documents may be accessed at www.brunel.ac.uk/about/administration.

Alternatively, copies of all documents can be obtained upon request from the University's Quality and Standards Office.

Your place will also be conditional upon you registering with the University, paying fees when due, meeting any offer conditions we advise to you in writing (such as qualifications required) and all necessary legal and other requirements to study here on the chosen course (such as criminal record checks, previous conviction details, health checks, immigration clearance and so on).

When you accept an offer of a place by the University, a legal contract is formed with the University on the basis of the terms and may be ended by the University if the relevant conditions are not met or our terms not complied with. The contract is governed by English law and subject to the jurisdiction of the English courts.

Please note that any living accommodation provided to you by the University (or any other party) will be subject to a separate contract and payment of accommodation fees under that separate contract. In entering into the contract, neither the student nor the University intends that any of the terms of the contract will be enforceable by any person not a party to it, by virtue of the Contracts (Rights of Third Parties) Act 1999.

If you have any queries regarding our terms or any relevant conditions, or would like to receive hard copies of any of the documents referred to above, please contact the University's Quality and Standards Office. For a full summary of the University's Terms and Conditions see www.brunel.ac.uk/about-this-website/terms.

DISCLAIMER

The University makes all reasonable efforts to deliver the programmes of study, research opportunities and other services and facilities described in this publication and other University documents. However, the University is entitled, if it reasonably considers it to be necessary (including in order to manage its resources and pursue its policy of continuous improvement appropriately):

- to suspend or discontinue programmes of study (for example, because a key member of staff is unwell or leaves the University);
- to make reasonable variations to the content and syllabus of programmes of study (including in relation to placements);
- to alter the timetable, location, number of classes and method of delivery of programmes of study, provided such alterations are reasonable; to make changes to the statutes, ordinances, regulations, policies and procedures that the University reasonably considers necessary (for example, in the light of changes in the law or the requirements of the University's regulators);
- to combine programmes of study if the University reasonably considers this to be necessary (for example, because too few students apply to join a programme for it to be viable).

In the unlikely event that the University discontinues or does not provide a programme of study or changes it significantly before it begins:

- the University will tell relevant individuals at the earliest possible opportunity;
- an individual will be entitled to withdraw his or her application by telling the University in writing;
- the University will make an appropriate refund of tuition fees and deposits paid.

The University will provide students with such tuition, learning support and other services and facilities as it considers appropriate, and with reasonable care and skill, but may vary what it provides from time to time (for example, the University may consider it desirable to change the way it provides library or IT support). The University will not be liable to you for any representations or descriptions in this undergraduate prospectus, or in any other University documents, and/or made to you verbally, unless and to the extent confirmed in the terms as outlined above. The terms contain the entire agreement between you and the University in relation to you being a student at the University.

Nothing in the summary of terms including this disclaimer excludes any liability which it would be unlawful to exclude. The University will not be liable to you in any manner whatsoever for any failure or delay, or for the consequences of any failure or delay, in performance of any contract with you if it is due to any event beyond our reasonable control including, without limitation, strikes, lockouts or other industrial action or disputes (whether involving our workforce or any other party), acts of God, pandemic, quarantine or widespread illness (whether affecting our staff and/or student body or otherwise), governmental requisitioning, emergency planning or provision, war, protests, fire, flood, storm, tempest, explosion, an actual, suspected or threatened act of terrorism, riot, civil commotion, national emergencies, breakdown of plant or machinery, or default of suppliers or sub-contractors.

PERSONAL ACCIDENT AND LIABILITY

All registered students are covered by the University's insurance for accidents that occur on campus. However, the University cannot accept responsibility for loss of, or any form of damage to, personal belongings of students.

RELIGIOUS FESTIVALS

The University tries, where at all possible, to accommodate students' wishes in observing religious festivals during examination periods.

DIVERSE BRUNEL (EQUALITY AND DIVERSITY STATEMENT)

Brunel University values inclusiveness and confirms its continuing commitment to the principles of equality and diversity in employment, admission, and in its teaching, learning and research activities. The University endeavours to ensure that all members of staff, students, visitors and applicants for employment or study are treated on the basis of their merits and abilities and that no one suffers discrimination or disadvantage because of their race, age, disability, gender reassignment, marriage or civil partnership, pregnancy or maternity, religion or belief (including lack of belief), sex and sexual orientation.

In order to achieve an environment that is free from unlawful discrimination and which encourages everyone to contribute fully to its work the University will endeavour to ensure that it:

- eliminates discrimination, harassment, victimisation and any other conduct that is prohibited by or under the Equality Act 2010;
- advances equality of opportunity and fosters good relations between people who share a relevant protected characteristic and people who do not share it by:
 - removing or minimising disadvantages suffered by staff and students and taking steps to meet their needs;
 - encouraging staff and students to participate in public life or in any other activity in which participation is disproportionately low;
 - tackling prejudice and promoting understanding within the University.

For a copy of the University's Equality and Diversity Statement and its supporting policies, visit www.brunel.ac.uk/about/administration/equality-and-diversity

WIDENING PARTICIPATION

For more information on Widening Participation at Brunel, see page 39.

Open Days

All days will include:

- a welcome and introduction to Brunel University;
- a tour of the campus and accommodation led by current students;
- a course presentation;
- a student life seminar – a chance to ask current students about University life;
- a finance session.

Dates for students considering entry in September 2014 are:

- Friday 21 June 2013
- Thursday 27 June 2013
- Friday 6 September 2013
- Wednesday 11 September 2013
- Friday 13 September 2013

Campus tours

A Campus Tour is a one hour, general tour of the campus, led by current students. Campus Tours take place on Wednesdays from mid-September to late November 2013 (excluding half term week), and on two weekdays during half-term. For upcoming dates, visit **www.brunel.ac.uk** and click the Open Days tab.

Visiting Brunel

Brunel Open Days and Campus Tours are an excellent opportunity for you to come and meet our staff and students, and see for yourself what the University is really like.

We want to make sure that you make the most of your visit, so the Open Days are carefully structured to help you find out all you need to know about the University and the courses that interest you. Parents and guests are most welcome to attend. Prior booking is essential to ensure that everyone can be accommodated within the programme. Timings vary, but will be confirmed when we acknowledge your booking. As a rough guide, the earliest you will need to arrive at an Open Day is 9am and the latest you will depart is 4pm. Please note that there is limited or no parking on campus for Open Days and Campus Tours – check the Web for more details nearer the time.

To book your place please telephone **+44 (0)1895 265595** or go to **www.brunel.ac.uk** and click the Open Days tab on the right of the homepage.

Our Open Days and Campus Tours in 2013 are intended for students considering entry in September 2014 or later. Applicants already holding an offer for 2013 entry and wishing to visit the University should contact the Admissions Office, on **+44 (0)1895 265265**.

How to find us

The Brunel University campus is in Uxbridge, on the western edge of London. It is a short drive from the M4, M40 and M25 and has the added benefit of being part of the London Underground network. There are also a number of bus routes running close to the campus.

As part of Brunel's commitment to sustainability, we have implemented a Travel Plan, one of the key aims of which is to reduce our carbon footprint by enabling students and staff to travel to the campus by alternative means with less dependency on cars.

Please use the maps on the following pages to help you find your way to Brunel, around the local area and around the campus.

BY UNDERGROUND

Uxbridge Station is approximately one mile from the campus and you should allow an hour for travel between central London (Baker Street) and Uxbridge on the Metropolitan Line. The Piccadilly Line also serves Uxbridge, but allow an extra half hour if using this line. Uxbridge bus station is on the right as you come through the underground turnstiles and the bus journey time to Brunel is about 10 minutes off peak and 15 minutes at peak times. See the next page for bus routes.

BY TRAIN

Trains run from London Paddington or the West (Bristol) to West Drayton. Catch the 222, U1 or the U3 bus to campus (see the next page for bus information).

BY CAR

Car parking is available on campus for our June and September Open Day events. Please note that there are a limited number of pay and display spaces available on campus for the Wednesday Campus Tours running throughout October and November 2013. Pay and display parking is charged at 50p per hour. Please note that there is NO PARKING available on campus for the October Half Term Campus Tours.

The campus is easily accessible by public transport or please park in The Chimes shopping centre in Uxbridge (approx 1 mile from campus).

M4: Leave M4 at Junction 4, follow signs to Uxbridge (A408) and Brunel University. At the second roundabout turn right and then left at the traffic lights. Continue ahead and turn left at the mini roundabout. Follow the road past Hillingdon Hospital on your left, straight over the mini roundabout and turn right into Kingston Lane. At the first roundabout, turn left into the University.

A40/M40: At Swakeleys Roundabout take the B483 exit to Uxbridge. Follow the signs across two mini roundabouts. At a major roundabout bear left onto the A4020 (signposted to Brunel), then at the second set of traffic lights turn right into Kingston Lane. At the first roundabout, turn right into the University.

M25: (from the North or South) Join the M40 or M4 then see above.

Access by car for registered disabled visitors:

Disabled parking bays are available at various locations around the campus. Please collect a permit from Main Reception in the Eastern Gateway Building on arrival.



BY BUS**From Uxbridge tube station:**

U3 (alight Brunel University, Cleveland Road)

U1, U4 and U7 (alight Brunel University, Kingston Lane)

222 and U5 (alight Cowley Road and use the path via the University accommodation complex)

From West Drayton railway station:

U1 (alight Brunel University, Kingston Lane)

U3 (alight Brunel University, Cleveland Road)

222 (alight Cowley Road and use the path via the University accommodation complex)

From Heathrow Central:

A10 "Heathrow Fast", every 15 mins, with a journey time of about 25 mins – alight Hillingdon Road (stop name The Greenway) and use the footpath to campus.

From Stockley Park:

A10 "Heathrow Fast" as above, with a journey time of about 10 mins.

Bus frequencies (weekdays)

A10 Heathrow Airport – Uxbridge: every 15 to 20 minutes

U1 Ruislip – West Drayton: every 15 minutes

U3 Heathrow Airport – Uxbridge: every 9-14 minutes

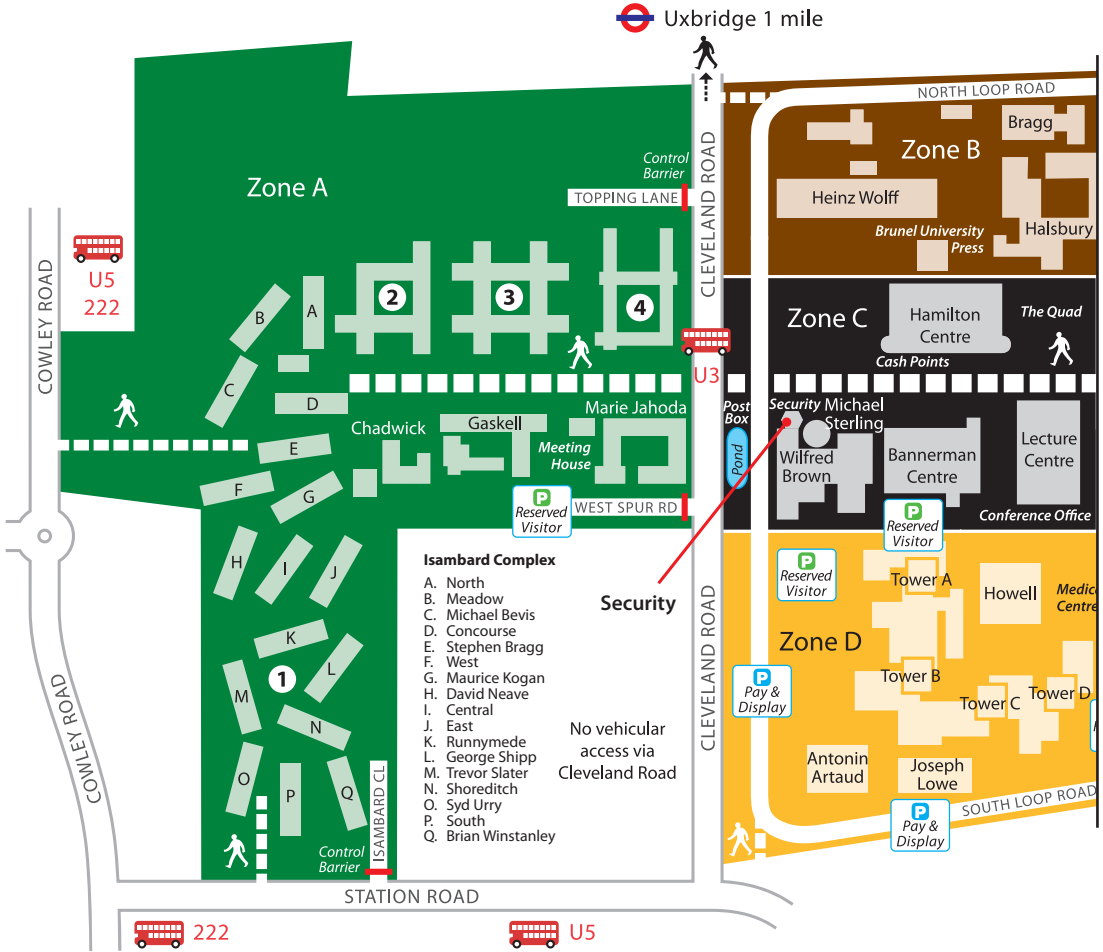
U4 Hayes – Uxbridge: every 7-12 minutes

U5 Hayes and Harlington – Uxbridge: every 8-13 minutes

U7 Hayes – Uxbridge: every 30 minutes

222 Hounslow – Uxbridge: every 6-10 minutes.





Zone A

Chadwick
Gaskell
Health Economics Research Group
School of Arts (taught programmes)

Marie Jahoda
School of Social Sciences (UG, PG and research offices)

Meeting House

Zone B

Arts Centre
Bragg
Experimental Techniques Centre
Brunel University Press

Halsbury
Graduate School
Institute for the Environment
School of Sport and Education
Wolfson Centre

Heinz Wolff
Biosciences (enquiries)
Brunel Institute for Bioengineering
School of Sport and Education

John Crank
Computer Centre
Mathematical Sciences (enquiries)

Zone C

Bannerman Centre
Assistive Technology Centre
Cash Office
Disability and Dyslexia Service
Job Shop
Library
Placement and Careers Centre
Student Centre
West London Assessment Centre

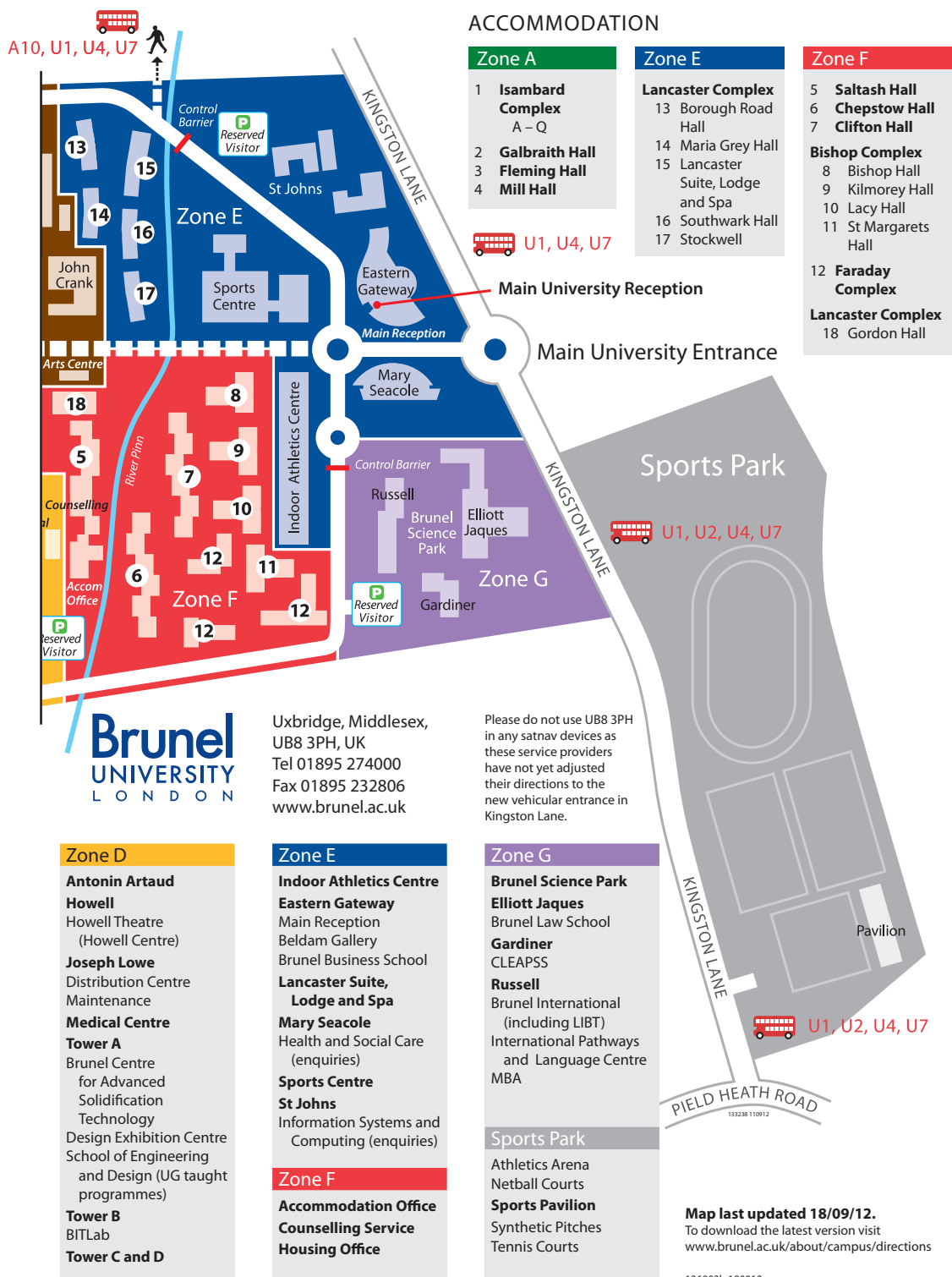
Hamilton Centre
Brunel Hospitality
Brunel Volunteers
Campus Shops
Students' Union

Lecture Centre
Conference Office
Media Services

Recital (Roberts) Room
APDU

Michael Sterling
Research Support and Development Office
School of Engineering and Design (PG taught and research programmes)

Wilfred Brown
Alumni
Estates (Operations and Resources)
Finance
Marketing
Registry/Admissions
Security



A10, U1, U4, U7

ACCOMMODATION

Zone A

- 1 Isambard Complex A – Q
- 2 Galbraith Hall
- 3 Fleming Hall
- 4 Mill Hall

Zone E

Lancaster Complex

- 13 Borough Road Hall
- 14 Maria Grey Hall
- 15 Lancaster Suite, Lodge and Spa
- 16 Southwark Hall
- 17 Stockwell

Zone F

- 5 Saltash Hall
- 6 Chepstow Hall
- 7 Clifton Hall

Bishop Complex

- 8 Bishop Hall
- 9 Kilmore Hall
- 10 Lacy Hall
- 11 St Margarets Hall

12 Faraday Complex

Lancaster Complex

- 18 Gordon Hall

U1, U4, U7

Main University Reception

Main University Entrance

Sports Park

U1, U2, U4, U7

KINGSTON LANE

PIELD HEATH ROAD

133238 110912

Uxbridge, Middlesex,
UB8 3PH, UK
Tel 01895 274000
Fax 01895 232806
www.brunel.ac.uk

Please do not use UB8 3PH in any satnav devices as these service providers have not yet adjusted their directions to the new vehicular entrance in Kingston Lane.



Ogechi Edeh

BIOMEDICAL SCIENCES

“

It was a tough decision, however, fast forward to the end of first year and I was glad I chose Brunel! My course was very broad at the start, giving me a chance to learn and adapt. Group work, individual assignments, labs sessions, lecturers' interesting research fields...I was awed from the start.

I was part of the selection Committee for shortlisting nominations for the first ever 'Student Led Teaching Awards'. I also attend Brunel Arts Centre's Gospel Choir and perform with other singing groups. I was able to join clubs and societies with the Union of Brunel Students. I am really enjoying my time here, and am now a course representative, a School rep and a student assembly member.

”

Who was Brunel?

Brunel University is named after the prolific engineer Isambard Kingdom Brunel. He was born in 1806, the son of a distinguished French engineer, Sir Marc Brunel, who had come to England at the time of the French Revolution. Brunel received a sound education and practical training before entering his father's office and taking full charge of the Thames Tunnel at Rotherhithe when he was only 20.

At the age of 26, he was appointed Engineer to the newly-formed Great Western Railway. His great civil engineering works on the line between London and Bristol are used by today's high-speed trains. He eventually engineered over 1,200 miles of railway, including lines in Ireland, Italy and Bengal. Brunel's other works included three ships, docks, viaducts, tunnels and buildings and the remarkable prefabricated hospital, with its air-conditioning and drainage systems for use in the Crimean War.

As his sketchbooks and notebooks show, he concerned himself with every aspect of the projects in which he was involved. In adopting the name of arguably the most famous of Victorian engineers, the University has sought to emulate his qualities: ingenuity and creativity, practicality and thoroughness, among others.



Index

A

Academic Skills Service (ASK).....	12
Accommodation	34
Accreditation	204
Adjustment and Clearing	5
Admissions Enquiries	5
Aerospace Engineering BEng/MEng	164
Anthropology	55
Anthropology BSc.....	56
Applying to Brunel.....	206
Arts (School of).....	59
Arts and culture.....	15
Automotive Engineering BEng/MEng	166
Aviation Engineering BEng/MEng.....	168
Aviation Engineering with Pilot Studies BEng/MEng	168

B

Beldam Gallery	15
Biomedical Sciences BSc.....	130
Broadcast Media (Design and Technology) BSc	112
Brunel International	43
Brunel Volunteers	25
Business and Management	81
Business and Management BSc.....	82
Business Computing BSc.....	144

C

Campus facilities.....	11
Campus life	27
Campus map	218
Campus tours	214
Careers resources	22
Central London.....	29
Civil Engineering.....	87
Civil Engineering BEng/MEng.....	88

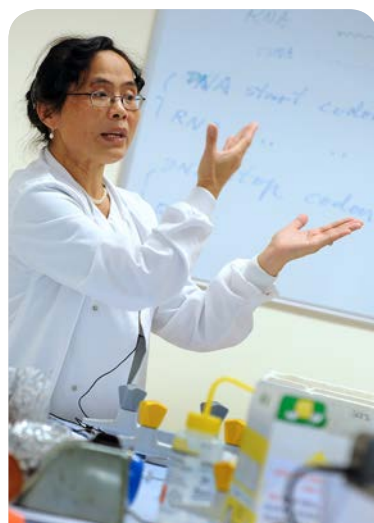
Civil Engineering with Sustainability BEng/MEng	90
Clubs and Societies	31
Communication and Media Studies BSc	188
Computer Centre	13
Computer Science BSc	146
Computer Systems Engineering (Networks) BEng	114
Computer Systems Engineering (Software) BEng	114
Computer Systems Engineering BEng	114
Computer Systems Engineering MEng	116
Contemporary Education BA	108
Contents	3
Counselling	38
Creative Writing BA	60

D

Degree and course structure	200
Design	93
Directions	214
Disabled Students' Allowances (DSA)	41

E

Economics and Accounting BSc	102
Economics and Finance	99
Economics BSc	100
Education	107
Electrical Engineering with Renewable Energy Systems MEng	124
Electronic and Communications Engineering BEng/MEng	118
Electronic and Computer Engineering	111
Electronic and Computer Engineering BEng/MEng	120
Electronic and Electrical Engineering BEng/MEng	122
Engineering with an Integrated Foundation Year	198
English BA	62
English Language Requirements	44
Entry requirements	208





F

Fees and funding	46
Film and Television Studies BA	64
Finance and Accounting BSc	104
Financial information for international students	50
Financial information for UK/EU students.....	50
Financial Mathematics BSc/MMath	154
Food and drink	33

G

Games Design BA	66
Gym	21

H

Health Sciences and Social Care	129
History BA	178
How to find us.....	214
Industrial Design and Technology BA	94

I

Information Systems and Computing	143
Information Systems, Computing and Mathematics with an Integrated Foundation Year	199
International Business BSc.....	84
International Enquiries	5
International Pathways and Language Centre (IPLC).....	13
International Politics BSc	180

J

Journalism BA NCTJ Accredited.....	68
------------------------------------	----

L

Law	149
Law LLB	150
Library	12
Local area	29

M

Maps	216
Mathematical Sciences.....	153
Mathematics and Statistics with Management BSc.....	160
Mathematics BSc/MMath	156
Mathematics with Computer Science BSc	158
Mechanical and Energy Engineering BEng/MEng	172
Mechanical Engineering.....	163
Mechanical Engineering BEng/MEng.....	170
Medical Centre	38
Modules and credits	202
Motorsport Engineering BEng/MEng.....	174
Multimedia Technology and Design BSc.....	126
Music Awards.....	15
Music BA	70
Musical Composition BMus.....	72
Musical Performance BMus.....	74

N

Nightlife.....	31
----------------	----

O

Occupational Therapy BSc.....	132
Open days and campus tours.....	5, 214

P

Physiotherapy BSc.....	134
Placements	22, 204
Politics BSc.....	180
Politics, History and International Relations	177
Product Design BSc.....	96
Product Design Engineering BSc	96
Programmes with an Integrated Foundation Year.....	197
Psychology	183
Psychology BSc	184





R

Request a prospectus..... 5

S

Social Work BA..... 136
 Sociology and Communications..... 187
 Sociology BSc..... 190
 Sonic Arts BA..... 76
 Specialist Community Public Health Nursing BSc..... 138
 Specialist Social Work
 (Adults/Children and Families) BA..... 140
 Sponsorship..... 205
 Sport..... 18
 Sport, Health and Exercise Sciences..... 193
 Sport, Health and Exercise Sciences BSc..... 194
 Sports Scholarships..... 19
 Student Media..... 37
 Study resources..... 12
 Subject Areas..... 53
 Summary of terms..... 212
 Support, health and wellbeing..... 37

T

Teaching and assessment..... 202
 Teaching and Research..... 7
 Teaching and Research..... 7
 The Arts Centre..... 15
 The best of city and country..... 29
 The Disability and Dyslexia Service..... 40
 The Meeting House..... 38
 The Union of Brunel Students (UBS)..... 30
 Theatre BA..... 78

V

Visiting Brunel214

W

West London Assessment Centre (WLAC)..... 41

Who was Brunel?..... 221

Widening Participation 39

Work placements..... 22

Working while you study 25

Credits

Edited by Emma Fitness, Publications Officer

Photography by Sally Trussler, Neil Graveney

Design by Richard Mitchell, Brunel University Press

Printed by Belmont Press

Our thanks, too, to all the staff, students, graduates, schools, hospitals, companies and organisations featured in this prospectus.

Officers of the University

Chancellor

to be appointed

Pro-Chancellor

The Rt Hon The Lord Lingfield

Vice-Chancellor and Principal

Professor Julia Buckingham

Vice-Principal

Professor Mansoor Sarhadi

Pro-Vice-Chancellors

Dr Mariann Rand-Weaver
(Quality Affairs)

Professor Geoff Rodgers
(Research)

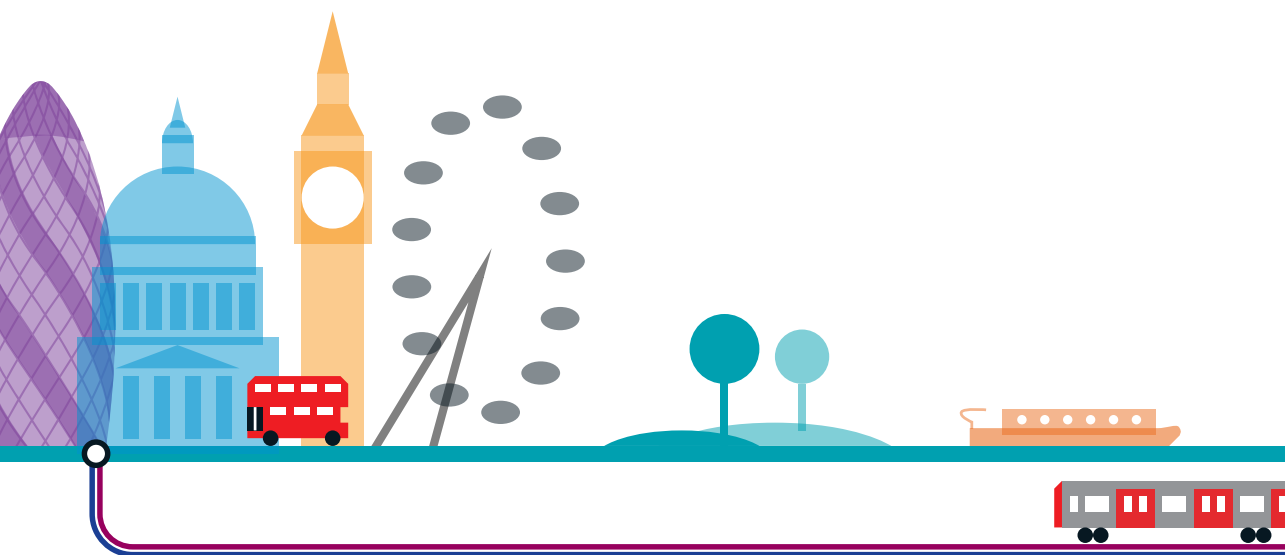
Professor Dany Nobus
(Strategy, Development and
External Relations)

Professor Ian Campbell
(Student Experience and Staff
Development)

Brunel
UNIVERSITY
L O N D O N

Copyright © Brunel University

ISSN 1361-4975



Printed by an ISO 14001
printer using vegetable
based inks on FSC certified
stock (100% recycled)

